



NEW UPDATE: DALI



INDUSTRIAL HALL

HIGHBAY LUMINAIRES

INDUSTRIAL HALL

At a glance

IP65

High type of protection
IP 65

Housing made of special plastic-graphite compound for optimum thermal management



Approved for use in the
food and drink industry



Integrable movement sensor as
an accessory available

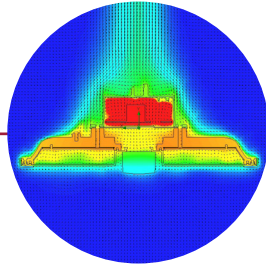


Quick and easy adjustment
of the most important parameters
by remote control

Easy to install thanks to
1-point suspension

DALI

NEW!
DALI version available



Luminaires with limited surface temperature
in accordance with DIN EN 60598-2-24
for use in environments in which a deposit of
conductive dust on the luminaire can be expected



MultiLumen:
3 steps adjustable luminous flux

Two-component optical system for
glare-free lighting up to $UGR \leq 19$

Highly efficient up to 161 lm/W



DALI



IP65

INDUSTRIAL HALL

Highbay luminaires

ARCHITECTURE

- **Long service life:** Housing made of special plastic-graphite compound for optimum thermal management.
- **Safe:** Luminaire with limited surface temperature in accordance with EN 60598-2-24.
- **Certified:** Qualified for use in the food and drink industry.

LIGHTING DESIGN

- **Powerful:** Highly efficient up to 166 lm/W.
- **Variable:** MultiLumen - 3-step adjustable luminous flux.
- **Anti-glare:** Two-component optical system for glare-free lighting up to $UGR \leq 19$.

INSTALLATION

- **Easy installation:** Easy to install thanks to 1-point suspension.
- **Advantageous:** On/Off: Integrable movement sensor as an accessory available.

Highbay luminaires | INDUSTRIAL HALL

Type of protection: **IP 65**
 Protection class: I
 Impact protection: IK05
 Operating range: -30°C to +50°C.

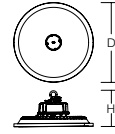
Housing made of special plastic-graphite compound for optimum thermal management. Specially matched 2-component polycarbonate optical system. Maximum efficiency and glare-free lighting up to $UGR \leq 19$. Easy to install thanks to 1-point suspension. On/Off: Integrable movement sensor as an accessory available.

▽ Luminaires with limited surface temperature in accordance with DIN EN 60598-2-24 for use in environments in which a deposit of conductive dust on the luminaire can be expected.

Suitable for chain or steel cable suspension (to be provided on site).

Available colour: 3 = black

MultiLumen: 3 steps adjustable luminous flux. Factory setting is the highest luminous flux.



Reference number	Dimensions [mm]	Lamp	Light colour	Luminous flux [lm]	System power [W]	System efficiency# [lm/W]	α [°]	UGR	dimmable
Highbay luminaires									
Price Category 21									
921533.003 *	D 380, H 150	LED	840	12200...23200	76...151	161	55	17,4...19,8	on/off
921533.003.76	D 380, H 150	LED	840	18500	112	166	61	19	DALI

* **MultiLumen:** Specification of the lowest and highest possible lumen output. You will find more detailed information on www.rzb-lighting.com.

Comparison LED vs. conventional lamps

- LED 76 W \approx**
1 x 150 W HIT (160 W Psys)
- LED 112 W \approx**
1 x 250 W HIE (275 W Psys)
- LED 151 W \approx**
2 x 150 W HIT (320 W Psys)

Accessories | Movement sensor for on/off version

Stand-alone movement sensor for presence-dependent lighting control with built-in daylight sensor. Presence detection using passive IR element for installation heights from 3 to max. 15 m. Detection range: 360° up to 10 m. Operating range: -30°C to +40°C. Quick and easy adjustment of the most important parameters by remote control (order separately: 982697.002).

Movement sensor for on/off version		Price Category 21
982681.002	D 55, H 65	



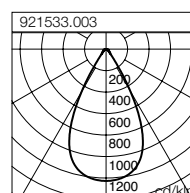
Remote control		Price Category 21
982697.002	L 175, B 56, H 28	Remote control for movement sensor: 982681.002



MultiLumen: Adjustable luminous flux

921533.003		
Step	Luminous flux [lm]	System power [W]
	4000 K	
1	12200	76
2	17600	110
3	23200	151

921533.003				
Hall 50 x 30 m (0 m)				
L _{ph}	100 lx	300 lx	500 lx	
12 m	9	25	42	
15 m	9	26	43	
18 m	9	27	45	
21 m	9	27	44	



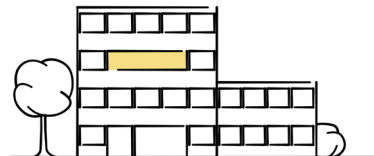
LIGHT MANAGEMENT SYSTEMS

Overview



light control +³ Economy Multi DALI

The unbeatable price/performance winner for smaller installations. The system combines simple commissioning via smartphone, low wiring effort and flexible configuration and is therefore ideal for **group offices, conference rooms and classrooms**. Programmable buttons and sensors can also be integrated via DALI connections in order to achieve even greater energy savings. The system has an integrated timer and can therefore be used to set up HCL.



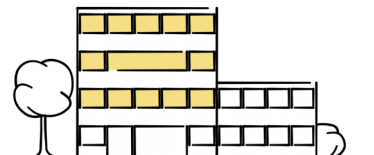
Casambi smart+free

The wireless light management system for maximum functions and configuration options. Casambi smart+free solutions are perfect for **residential buildings, shop und hotel**, as 3-wire cabling is enough - also suitable as a module for subsequent installation into existing luminaires. The module is already integrated into luminaires with the article number ending .730. You can configure the system to your individual needs due to the wide range of accessories from the Casambi ecosystem. The integration here is very intuitive and can be completed by users without prior knowledge in just a few minutes.



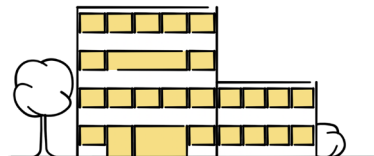
light control +³ Professional Control

The system is suitable for complex applications in **warehouses, room and floor control and production areas**; daylight dependant control, dynamic light control to circadian daylight simulation in Human Centric Lighting (HCL) and monitoring of energy data. In addition, the systems can be networked to make luminaire data available to other systems. light control+³ Professional is the perfect entry level lighting system for the IoT world.



light control +³ Professional Customised

Lighting management can integrate with your **building management system** in **office buildings, production halls and terminals**. In this way, you can combine trades such as heating, sanitation, ventilation, security and blinds with lighting in one control system and even add additional functions such as monitoring, predictive maintenance and energy reporting if desired. Other additional functions can be programmed and integrated as per your individual requirements. Our support team would be happy to help in this regard, from planning up to commissioning.



You still haven't found the right system for you?

Along with the systems shown here, we would also be happy to create a customised control system for your project. Please contact your designated on-site sales employee or contact our Planning department via e-mail at ims@rzb-leuchten.de or by phone at +49 951 / 79 09-396.

INDUSTRIAL HALL

Discover the possibilities...

FURTHER LUMINAIRES, MATCHING THIS SERIES:



⊕ INDUSTRIAL HALL



⊕ INDUSTRIAL HALL



⊕ INDUSTRIAL HALL



⊕ HB 720

HIGHEST PRODUCT AND CONSULTING QUALITY

⊕ RELIABILITY

We are your reliable partner. From the first idea to the implementation and far beyond, we accompany your project. Personal, passionate and individual. Thanks to our excellent expertise, top product quality and services such as light planning, economic efficiency analysis and commissioning, we meet the high demands of all parties involved in the planning process.

- ✓ availability of BIM files
- ✓ easy and quick installation
- ✓ quality and long warranty

⊕ WARRANTY

The creation of high quality lighting solutions is our passion. Our products are developed and manufactured with the utmost care.

In addition to SMART TECHNOLOGY and EXCELLENT DESIGN, we are dedicated to manufacture luminaires of highest quality throughout the entire value chain through to After Sales Service.

Because of this, we confidently grant you a 5 years warranty on LED luminaires and 2 years warranty on emergency luminaires with effect of the date of invoice without prior registration of your project.

Warranty terms to be found under www.rzb.de/en/service/warranty

RZB - FOR A TANGIBLE ADDED VALUE.



RZB
Rudolf Zimmermann,
Bamberg GmbH

Rheinstr. 16
96052 Bamberg
Germany

Phone +49 951 79 09-374

www.rzb-lighting.com
export@rzb.eu

