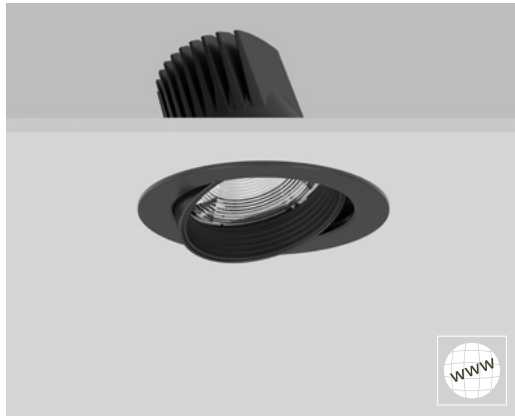


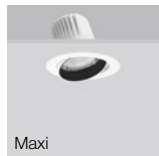
## Recessed spotlight



### Overview



Mini

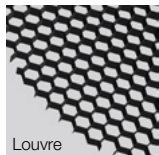


Maxi

### Accessories



Cover discs



Louvre



Interchangeable lenses



Through-wiring

## RONDOS

### Why was the product developed?

**Highest demands on:** quality, design and technology - combined in one luminaire

**Aim for versatility:** vision of a spotlight which is equally suitable for a lens and reflector

**Responsibility for the future:** development of a resource-saving modular system

### Which problem is solved by the luminaire?

**Planning flexibility:** MultiLumen function and high variety for almost all lighting tasks in shops, museums, galleries and at exhibitions

**Short maintenance intervals:** durable LEDs render frequent maintenance tasks obsolete

### Product benefits

- + **Highest demands on:** quality, design, technology with new functions such as MultiLumen
- + **Durable:** rated LED life of 100,000 h (L80)
- + **Smart design:** resource-saving modular system with replaceable and recyclable components.
- + **Huge choice:** large number of housing shapes with the same design language, light colours, lenses and accessories

Available, MultiLumen versions from June 2026 | Prices from €192.80



Mini: D 143 | Maxi: D 178 mm



White



Silver



Black



spot



medium



flood



wide-flood



asym



CRI  
>90



927



930



935



940



Food



2  
SDCM



100 000  
hours  
LED life time



LED

100000 h (L80)



MultiLumen



lm

1600 - 8700 lm



lm/W

up to 154 lm/W



on/off



DALI



IP20



IK06



Plug & Play



Made in  
Germany



BEG  
FÖRDERUNG

+ SHOP STORES