



UPDATE:  
Emergency lighting

# PLANOX ECO

LUMINAIRES FOR MOIST/HUMID ENVIRONMENTS

# PLANOX ECO

Overview





Luminaires for moist/humid environments



**PLANOX ECO**  
page 11-12

Combined luminaires for  
escape route illumination



**PLANOX ECO FARM**  
page 13



**PLANOX**  
page 15





# PLANOX ECO

Luminaires for moist/humid environments

## Yes. Different from the rest...

Even more energy efficient, even more durable and even smarter: After the latest technical relaunch, PLANOX ECO is once again justifiably being referred to as the "most innovative moisture-proof luminaire of its kind". The best of all the clever improvements now is undoubtedly the MultiLumen function – the combination of several wattage levels in one single luminaire body: there could hardly be a more appropriate and more efficient solution.

The "FARM" version of the PLANOX ECO has also been designed down to the smallest detail for installation-friendly, low-maintenance and high-performance use in harsh environments. At the same time, it is suitable as a highly economical lighting solution for production facilities with high levels of dust and ammonia – complete with German Agricultural Society (DLG) approval.

## Architecture

- ⊕ **Protected:** IP66 - High type of protection for tough requirements.
- ⊕ **Robust:** IK08 - Versions with diffuser made of shockproof polycarbonate.
- ⊕ **Versatile:** Ammonia-resistant version DLG approved.
- ⊕ **Tested:** Qualified for use in the food and drink industry.
- ⊕ **Safe:** Luminaire with limited surface temperature in accordance with EN 60598-2-24.
- ⊕ **Combinable:** Also available as an emergency luminaire in accordance with EN IEC 60598-2-22.

## Lighting design

- ⊕ **Powerful:** High luminous flux up to 9000 lm.
- ⊕ **Efficient:** Luminous efficiency up to 157 lm/W.
- ⊕ **MultiLumen:** Several steps adjustable luminous flux.
- ⊕ **Uniform:** The diffuser with inner prisms guarantees homogenous light distribution.
- ⊕ **Dynamic:** Versions with infrared movement sensor.
- ⊕ **Reliable planning:** Suitable for lighting in public car parks and public off-street parking spaces according to EN-67528.

## Installation

- ⊕ **Easy installation:** Tool-free opening and closing with twist lock.
- ⊕ **Standard:** Through-wiring for additional luminaires.
- ⊕ **Versatile:** Surface and pendant mounting.
- ⊕ **Flexible:** Sliding mounting brackets. Ideal for luminaire replacement.
- ⊕ **Integrated:** Cable entries at both ends.



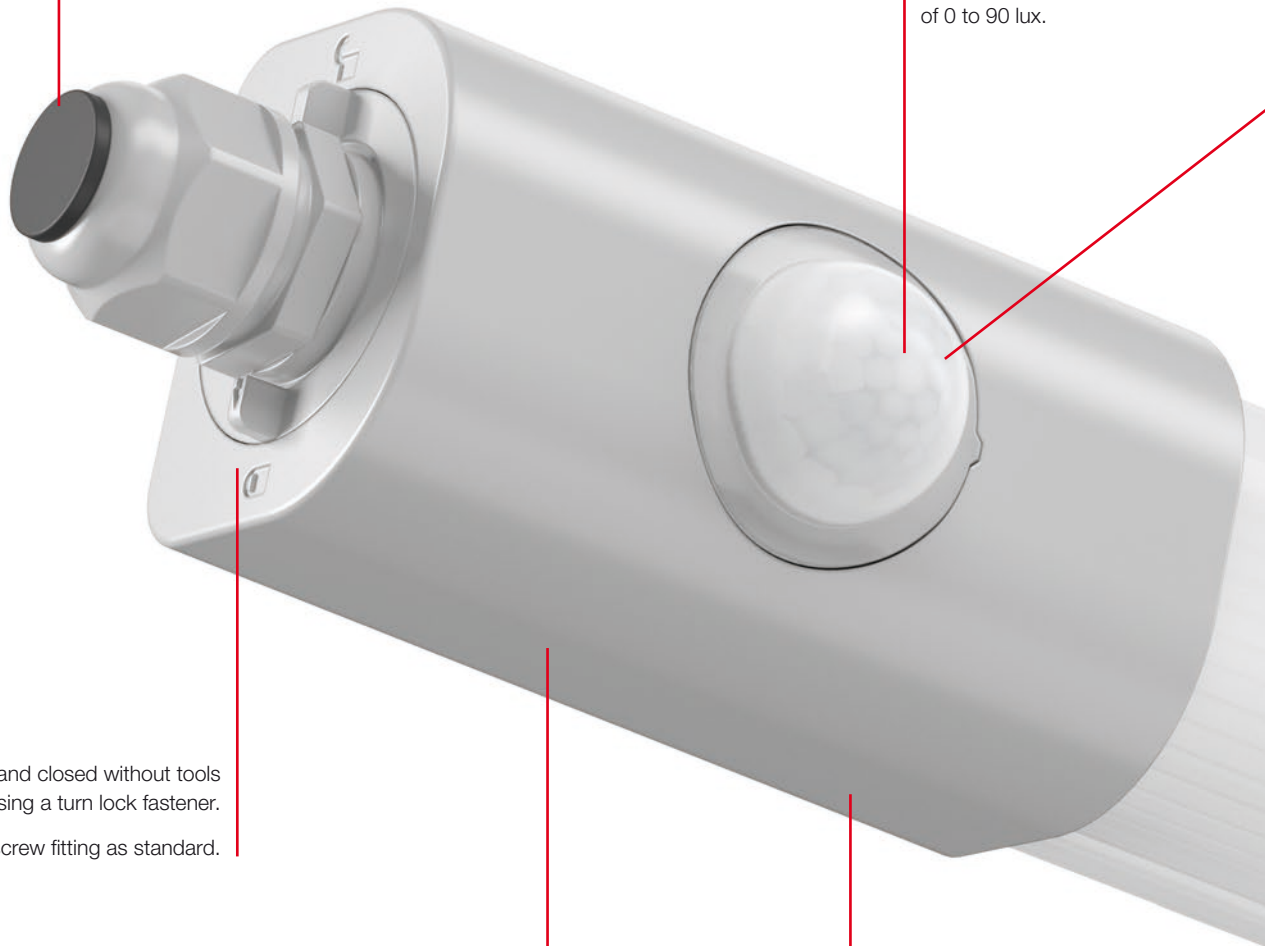
# PLANOX ECO | PLANOX ECO FARM

## Technology



PLANOX ECO:  
Versions with infrared  
movement sensor:  
adjustable time delay  
of 10 s to 20 min and  
response brightness  
of 0 to 90 lux.

Sealed as standard.



Can be opened and closed without tools  
using a turn lock fastener.

Cable screw fitting as standard.

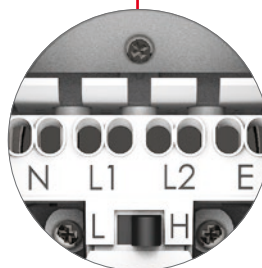
### MultiLumen:

The user can choose from several different luminous flux levels.

- 2 levels (**L**=Low/**H**=High)
- 3 levels (**L**=Low/**M**=Middle/**H**=High)

Thanks to the switch in the luminaire the lumen output  
can easily be changed even after installation.

The initial setting is "H" (high lumen).



IK08



PLANOX ECO:  
Diffuser and end caps made of  
shockproof polycarbonate.





The sensitivity and time regulation can simply be adjusted with movement sensor model.

**Master-Slave operation possible.**



Also available as an emergency luminaire in accordance with EN IEC 60598-2-22.



Qualified for use in the food and drink industry.



#### PLANOX ECO FARM

Certified by DLG. This luminaire is resistant to ammonia and is suitable for high pressure cleaning with a min. distance of 10 cm.

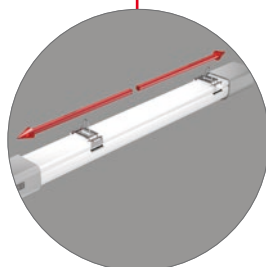
Therefore ideally useable in livestock housing and agricultural buildings.

Diffuser and end caps made of ammonia resistant PMMA.



Luminaires with limited surface temperature in accordance with DIN EN 60598-2-24 for use in environments in which a deposit of conductive dust on the luminaire can be expected.

Flexible installation thanks to sliding mounting bracket.  
Ideal for luminaire replacement.



Indirect light to illuminate the ceiling.  
Homogeneous illumination through satin finish diffuser.



# PLANOX ECO

My strengths in detail



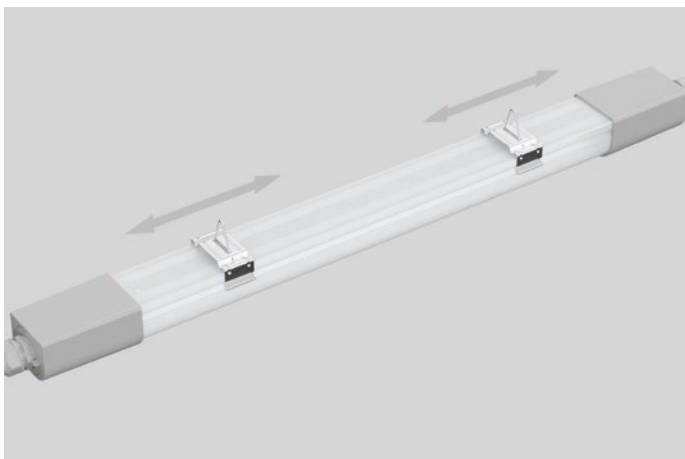
## + I can withstand quite a lot

Diffuser and end caps made of impact-resistant polycarbonate make the luminaire a genuine all-rounder in tough environments. Thanks to its high IP66 protection type and IK08 impact resistance, this version can withstand even the most extreme environmental conditions.



## + Prepared for anything

PLANOX ECO is equipped with the MultiLumen function for adaptability and economy. It allows an uncomplicated change between two resp. three luminous flux packages via dip switch. This means that the luminaire can be adapted to change lighting requirements without any significant effort, even after installation.



## + Quick and easy

Cable entry via a cable gland at both ends allows an extremely easy handling of the luminaire, as do the sliding stainless steel brackets, which enable to use existing drill holes again. As a result, it really does not take much time at all to install these luminaires in new installations or to exchange them from 'old to new' as a refurbishment.

Thanks to the standard through-wiring, several luminaires can be quickly and conveniently interconnected.





## + In action: light on!

HF motion detectors with master-slave function enable control of several luminaires. The master luminaire is activated by movement and controls the simultaneous switch-on of the slave luminaires.

This system offers an intelligent and efficient way to monitor rooms and control lighting while increasing safety and reducing energy costs.



## + I will never leave you in the dark

As a luminaire generalist, we combine general lighting with emergency lighting to create an entire lighting solution. Our products not only provide optimal and efficient light, but also integrated safety functions to ensure orientation and safety in buildings during emergencies.



## + Durable most certainly

Whether humidity, extreme temperatures, dust, salts, acids or vapours, these exceptionally high strains are no problem for the ammonia-resistant "FARM" version. These version was specially developed for exceptionally high requirements. Confirmed by the DLG test mark, this makes it a reliable recommendation for permanent use in barns with livestock and in agricultural side areas.



## Photometrics

- ⊕ Luminous efficiency up to 157 lm/W
- ⊕ Luminous flux up to 9000 lm
- ⊕ Colour temperature 3000 K and 4000 K
- ⊕ Colour rendering index Ra > 80
- ⊕ Symmetrical light distribution
- ⊕ LED rated life 50000 h (L80)
- ⊕ Colour matching tolerance 4-steps MacAdam (4 SDCM)
- ⊕ 1:1 substitute for luminaires with fluorescent lamps

### Ceiling and wall luminaires | PLANOX ECO

Type of protection: **IP 66**

Protection class: II

Impact protection: IK08

Side panels: plastic, grey polycarbonate, shockproof. Diffuser: plastic (non-yellowing polycarbonate), opal, impact resistant. Converter encapsulated, integrated and permanently connected to the diffuser and side panel. Cable screw fittings for convenient wiring. Turn lock fastener on both sides for easy installation. Luminaire with integrated through-wiring for lining up further luminaires. Ceiling mounting stainless steel brackets and triangular brackets for pendant mounting included in delivery.

▽ Luminaires with limited surface temperature in accordance with DIN EN 60598-2-24 for use in environments in which a deposit of conductive dust on the luminaire can be expected.

Available colour: 9 = grey

**MultiLumen:** 2 or 3 steps adjustable luminous flux. Factory setting is the highest luminous flux.



Reference number	Dimensions [mm]	Lamp	Light colour	Luminous flux [lm]	System power [W]	Max. luminous-efficiency [lm/W]	dim-able	Price Category 11
<b>Ceiling, wall and pendant luminaires</b>								
451210.009..Q*	L 769, B 61, H 50	LED	840	1100/2100	9/17	124	on/off	
451210.009.76	L 852, B 61, H 50	LED	840	2100	16	132	DALI	
451218.009.3*	L 1369, B 61, H 50	LED	830	2800/4600	22/37	128	on/off	
451218.009..Q*	L 1369, B 61, H 50	LED	840	3050/4950	22/37	139	on/off	
451218.009.76	L 1452, B 61, H 50	LED	840	4950	36	138	DALI	
451219.009.2*	L 1669, B 61, H 50	LED	830	4350/6300	33/54	132	on/off	
451219.009..Q*	L 1669, B 61, H 50	LED	840	4700/6800	33/54	143	on/off	
451219.009.76	L 1752, B 61, H 50	LED	840	6800	50	136	DALI	
451236.009.1*	L 1680, B 61, H 50	LED	830	4700...8600	32...62	147	on/off	
451236.009*	L 1680, B 61, H 50	LED	840	5000...9000	32...62	157	on/off	

\* **MultiLumen:** Specification of the lowest and highest possible lumen output. You will find more detailed information on [www.rzb-lighting.com](http://www.rzb-lighting.com).

Mounting brackets made of stainless steel (theft protection) for ceiling and wall mounting		Price Category 11
982430.000	L 146, B 16, H 38	

End piece for turn lock fastener with D 25 mm		Price Category 11
982179.009	D 25, H 13	

### Comparison LED vs. conventional lamps

**LED 9 W ≈**  
1 x 21 W T16 (24 W P<sub>sys</sub>)

**LED 16 / 17 W ≈**  
1 x 39 W T16 (41 W P<sub>sys</sub>)

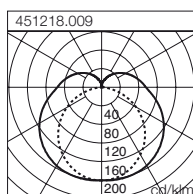
**LED 22 W ≈**  
1 x 54 W T16 (58 W P<sub>sys</sub>)  
1 x 58 W T26 (59 W P<sub>sys</sub>)

**LED 32 / 33 / 36 / 37 W ≈**  
1 x 80 W T16 (86 W P<sub>sys</sub>)

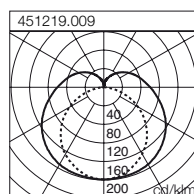
**LED 50 / 54 W ≈**  
2 x 58 W T26 (118 W P<sub>sys</sub>)

**LED 62 W ≈**  
3 x 58 W T26 (177 W)

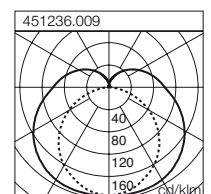
451218.009 (4950 lm)			
<b>Floor 12 x 2.5 x 3 m (0.2 m)</b>			
100 lx	150 lx	200 lx	
2	3	4	
<b>Room 6 x 4 x 3 m (0.75 m)</b>			
200 lx	300 lx	500 lx	
3	5	68	



451219.009 (6800 lm)			
<b>Floor 12 x 2.5 x 3 m (0.2 m)</b>			
100 lx	150 lx	200 lx	
2	2	3	
<b>Room 6 x 4 x 3 m (0.75 m)</b>			
200 lx	300 lx	500 lx	
2	3	5	



451236.009 (9000 lm)			
<b>Floor 12 x 2.5 x 3 m (0.2 m)</b>			
100 lx	150 lx	200 lx	
1	2	2	
<b>Room 6 x 4 x 3 m (0.75 m)</b>			
200 lx	300 lx	500 lx	
2	2	4	



# PLANOX ECO

## Product overview



### Ceiling and wall luminaires | PLANOX ECO - movement sensor

Type of protection: **IP 66**  
 Protection class: II  
 Impact protection: IK08



Side panels: plastic, grey polycarbonate, shockproof. Diffuser: plastic (non-yellowing polycarbonate), opal, impact resistant. Converter encapsulated, integrated and permanently connected to the diffuser and side panel. Cable screw fittings for convenient wiring. Turn lock fastener on both sides for easy installation. Luminaire with integrated 4-phase through-wiring to connect multiple luminaires. Ceiling mounting stainless steel brackets and triangular brackets for pendant mounting included in delivery. With integrated movement sensor. Master-Slave operation possible.

▽ Luminaires with limited surface temperature in accordance with DIN EN 60598-2-24 for use in environments in which a deposit of conductive dust on the luminaire can be expected.

Available colour: 9 = grey

**MultiLumen:** 2 steps adjustable luminous flux. Factory setting is the highest luminous flux.

### Comparison LED vs. conventional lamps

- LED 9 W ≈**  
1 x 21 W T16 (24 W P<sub>sys</sub>)
- LED 17 W ≈**  
1 x 39 W T16 (41 W P<sub>sys</sub>)
- LED 22 W ≈**  
1 x 54 W T16 (58 W P<sub>sys</sub>)  
1 x 58 W T26 (59 W P<sub>sys</sub>)
- LED 33 / 37 W ≈**  
1 x 80 W T16 (86 W P<sub>sys</sub>)
- LED 54 W ≈**  
2 x 58 W T26 (118 W P<sub>sys</sub>)



Reference number	Dimensions [mm]	Lamp	Light colour	Luminous flux [lm]	System power [W]	Max. luminous-efficiency [lm/W]	dim-able	Price Category 11
451210.009.19 .Q	L 800, B 66, H 71	LED	840	1100/2100	9/17	124	on/off	
451218.009.19 .Q	L 1400, B 66, H 71	LED	840	3050/4950	22/37	139	on/off	
451219.009.19 .Q	L 1700, B 66, H 71	LED	840	4700/6800	33/54	143	on/off	

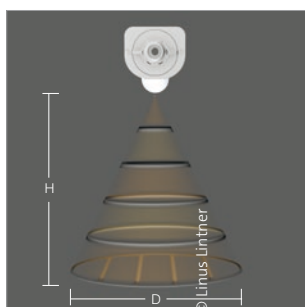
**MultiLumen:** Specification of the lowest and highest possible lumen output. You will find more detailed information on [www.rzb-lighting.com](http://www.rzb-lighting.com).

Mounting brackets made of stainless steel (theft protection) for ceiling and wall mounting							Price Category 11
982180.000	L 115, B 13, H 62						

End piece for turn lock fastener with D 25 mm							Price Category 11
982179.009	D 25, H 13						

### Details on movement sensor

Single luminaire with infrared movement sensor.  
 Detection range 360°. Cover of movement sensor made of polyethylene, prismatic. Run-down time and intensity can be adjusted.



Technical data on movement sensor					
Tolerance 10 percent					
Mounting height (H)	3,0 m	4,0 m	5,0 m	6,0 m	8,0 m
Detection range (Diameter D)	7,40 m	11,0 m	13,0 m	13,8 m	14,4 m
Run-down time	10 s - 20 min adjustable				
Intensity	0 - 90 lx adjustable				
Detection angle	120°				



### Ceiling and wall luminaires | PLANOX ECO FARM

Type of protection: **IP 66**  
 Protection class: II  
 Impact protection: IK07

Side panels: plastic, grey polyamide. Diffuser made of non-yellowing plastic (PMMA), opal. Converter encapsulated, integrated and permanently connected to the diffuser and side panel. Cable screw fittings for convenient wiring. Luminaire with intergrated 4-phase through-wiring to connect multiple luminaires. Ceiling mounting stainless steel brackets and triangular brackets for pendant mounting included in delivery.

▽ Luminaires with limited surface temperature in accordance with DIN EN 60598-2-24 for use in environments in which a deposit of conductive dust on the luminaire can be expected.

**Ammonia resistant** : Suitable for the use in stables with livestock and agricultural side areas.

Available colour: 9 = grey

**MultiLumen**: 2 steps adjustable luminous flux. Factory setting is the highest luminous flux.



Reference number	Dimensions [mm]	Lamp	Light colour	Luminous flux [lm]	System power [W]	Max. luminous-efficiency [lm/W]	dim-able	Price Category 11
<b>Ceiling, wall and pendant luminaires</b>								
451212.009.1 .Q	L 1369, B 61, H 50	LED	840	3050/4950	22/37	139	on/off	
451214.009.1 .Q	L 1669, B 61, H 50	LED	840	4700/6800	33/54	143	on/off	
<b>Mounting brackets made of stainless steel (theft protection) for ceiling and wall mounting</b>								
982430.000	L 146, B 16, H 38							
<b>Turn lock fastening</b>								
982429.019	D 44, H 41							

### Comparison LED vs. conventional lamps

#### LED 22 W ≈

1 x 54 W T16 (58 W Psys)  
 1 x 58 W T26 (59 W Psys)

#### LED 33 / 37 W ≈

1 x 80 W T16 (86 W Psys)

#### LED 54 W ≈

2 x 58 W T26 (118 W Psys)







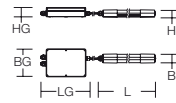
### Ceiling and wall luminaires | PLANOX ECO

Type of protection: **IP 66**  
 Protection class: I, II  
 Impact protection: IK08

Side panels: plastic, grey polycarbonate, shockproof. Diffuser: plastic (non-yellowing polycarbonate), opal, impact resistant. Cable screw fittings for convenient wiring. Stainless steel brackets for ceiling mounting and triangular brackets for pendant mounting included in delivery.

▽ Luminaires with limited surface temperature in accordance with DIN EN 60598-2-24 for use in environments in which a deposit of conductive dust on the luminaire can be expected.

Available colour: 9 = grey



### Self-contained emergency luminaires

Connection via separate emergency light box with through-wiring.  
 Emergency light box dimensions: LG 329, BG 184, HG 61 mm.  
 Connection cable from the luminaire to the emergency light box: 500 mm.



**Fixing set for pendant mounting of emergency light box needs to be ordered separately!**

Voltage type: AC

Automatic self test in all standard versions.

Operating mode: Can either be connected in non-maintained power mode or in maintained power mode.



### Luminaires for central battery system

Converter encapsulated, integrated and permanently connected to the diffuser and side panel. Turn lock fastener on both sides for easy installation. Through-wiring as standard.

Voltage type: AC/DC

Reference number	Dimensions [mm]	Light colour	Luminous flux [lm]	Luminous flux emergency [lm]	System power [W]	Battery	Monitoring [h]	Price Category 23
<b>Self-contained emergency luminaires, protection class I</b>								
672573.009	L 749, B 61, H 50	840	1150/2250	460 lm	11 / 17	LiFePO4	3 Autotest	
672573.009.04	L 749, B 61, H 50	840	1150/2250	460 lm	11 / 17	LiFePO4	3 MultiDigit	
672573.009.07	L 749, B 61, H 50	840	1150/2250	460 lm	11 / 17	LiFePO4	3 DALI-Sibe	
672576.009	L 1349, B 61, H 50	840	3150/5000	450 lm	21 / 35	LiFePO4	3 Autotest	
672576.009.04	L 1349, B 61, H 50	840	3150/5000	450 lm	21 / 35	LiFePO4	3 MultiDigit	
672576.009.07	L 1349, B 61, H 50	840	3150/5000	450 lm	21 / 35	LiFePO4	3 DALI-Sibe	
672579.009	L 1649, B 61, H 50	840	4950/7150	440 lm	33 / 49	LiFePO4	3 Autotest	
672579.009.04	L 1649, B 61, H 50	840	4950/7150	440 lm	33 / 49	LiFePO4	3 MultiDigit	
672579.009.07	L 1649, B 61, H 50	840	4950/7150	440 lm	33 / 49	LiFePO4	3 DALI-Sibe	

Reference number	Dimensions [mm]	Description	Price Category 23
983066.000	L 46, B 33, H 24	consisting of 2 brackets, 2 snap hooks and 2 cheese head screws	

Reference number	Dimensions [mm]	Luminous flux [lm]	Luminous flux emergency [lm]	System power [W]	Battery	Monitoring	Price Category 24
<b>Luminaires for central battery system, protection class II</b>							
672575.009	L 852, B 61, H 50	840	2100	720 lm	16	without battery	Standard
672578.009	L 1452, B 61, H 50	840	4950	740 lm	36	without battery	Standard
672581.009	L 1752, B 61, H 50	840	6800	750 lm	50	without battery	Standard



672573.009					
Luminous flux emergency: 460 lm					
Following values are indicated in m					
h	a	b	c	d	
2,5	11,8	4,5	9,2	3,7	
3,0	12,4	4,7	9,9	3,8	
3,5	12,9	4,8	10,4	4,0	
4,0	13,2	4,8	10,8	4,0	

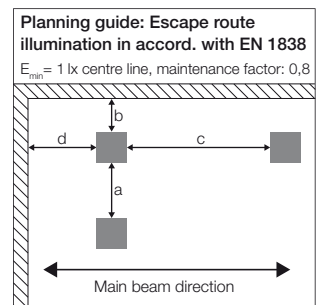
672576.009					
Luminous flux emergency: 450 lm					
Following values are indicated in m					
h	a	b	c	d	
2,5	11,6	4,5	9,1	3,6	
3,0	12,3	4,6	9,8	3,8	
3,5	12,7	4,7	10,3	3,9	
4,0	13,1	4,8	10,7	4,0	

672579.009					
Luminous flux emergency: 440 lm					
Following values are indicated in m					
h	a	b	c	d	
2,5	11,6	4,5	9,0	3,6	
3,0	12,2	4,6	9,7	3,8	
3,5	12,7	4,7	10,2	3,9	
4,0	13,0	4,7	10,6	3,9	

672575.009					
Luminous flux emergency: 720 lm					
Following values are indicated in m					
h	a	b	c	d	
2,5	10,5	4,3	13,7	5,4	
3,0	11,4	4,5	14,6	5,6	
3,5	12,1	4,8	15,2	5,8	
4,0	12,7	4,9	15,8	6,0	

672578.009					
Luminous flux emergency: 740 lm					
Following values are indicated in m					
h	a	b	c	d	
2,5	10,6	4,3	13,9	5,4	
3,0	11,5	4,6	14,7	5,7	
3,5	12,2	4,8	15,3	5,9	
4,0	12,8	5,0	15,9	6,0	

672581.009					
Luminous flux emergency: 750 lm					
Following values are indicated in m					
h	a	b	c	d	
2,5	10,6	4,3	13,9	5,4	
3,0	11,5	4,6	14,8	5,7	
3,5	12,2	4,8	15,4	5,9	
4,0	12,8	5,0	16,0	6,1	





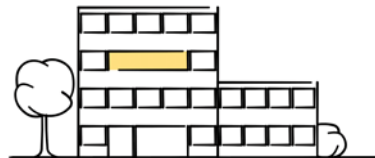
# LIGHT MANAGEMENT SYSTEMS

## Overview



### light control +<sup>3</sup> Economy Multi DALI

The unbeatable price/performance winner for smaller installations. The system combines simple commissioning via smartphone, low wiring effort and flexible configuration and is therefore ideal for **group offices, conference rooms and classrooms**. Programmable buttons and sensors can also be integrated via DALI connections in order to achieve even greater energy savings. The system has an integrated timer and can therefore be used to set up HCL.



### Casambi smart+free

The wireless Bluetooth® light management system for maximum functions and configuration options. **Casambi smart+free solutions are particularly suitable for applications where wireless networking is required.** The modules are also suitable for retrofitting in existing luminaires, as only a power supply is required. The module is already integrated into luminaires with the article number ending .730. With accessories from the extensive Casambi ecosystem (Catalogue starting on P. 576), the system can be configured according to individual needs. The integration here is very intuitive and can be completed by users without prior knowledge in just a few minutes.

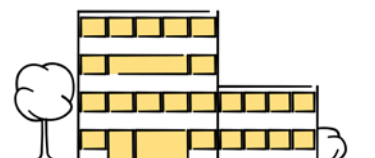


Casambi App - download now!



### light control +<sup>3</sup> Professional IoT

The future of automated light control: RZB's IoT system. Daylight-dependent control and dynamic light control up to circadian daylight simulation in Human Centric Lighting (HCL) are easy to implement. In addition, the control system can be easily networked to make luminaire data available to other systems. Automatic switch-off functions save energy and money. All this can be configured across several rooms and floors.



#### You still haven't found the right system for you?

Along with the systems shown here, we would also be happy to create a customised control system for your project. Please contact your designated on-site sales employee or contact our Planning department via e-mail at [ims@rzb-leuchten.de](mailto:ims@rzb-leuchten.de) or by phone at +49 951 / 79 09-396.

	<b>light control +<sup>3</sup> Economy Multi DALI</b>  	<b>Casambi smart+free</b>  	<b>light control +<sup>3</sup> Professional IoT</b>  
Application	Single room	Wireless networking	Building control
Can be combined with			
Communication	wired	wireless	wired
Infrastructure requirements	L, N, PE, DA, DA (5 wires cable)	L, N, PE (3 wires cable)	L, N, PE, DA, DA (5 wires cable)
Commissioning	by electrician	by electrician	RZB service technician
Configuration	App, Plug&Play	App, Remote access	PC-Tool, Remote access
Operation	Switches, Buttons, App	Switches, Buttons, App	Switches, Buttons, App, Web access
Number of luminaires (1 EB) <small>(Number of luminaires depends on the number of EB in the luminaire)</small>	32	up to 64 depending on the module	128
Number of sensors/push-button coupler <small>(presence, motion)</small>	4	1 per module	126
Dimmable	✓	✓	✓
Motion/presence detection	✓	✓	✓
Daylight-dependent control	✓	✓	✓
Scenes/Groups	✓	✓	✓
Timer/Calendar functions	✓	✓	✓
HCL / Tunable White	✓	✓	✓
RGB		✓	✓
Network integration		✓	✓
Remote access: programming, operation, maintenance		✓	✓
IoT ready		✓	✓
Predictive maintenance, monitoring, read out luminaire data			✓
Beacon for indoor navigation, tracking, asset management		✓	
Luminaires with the reference number extension	.76 (DALI)	.730 (smart+free)	.76 (DALI)

# CHEMICAL RESISTANCE

to the plastics used in the manufactured luminaires

Product overview

Chemical Agents	max. concentration	PC	PMMA
Acetone		-	-
Battery Acid		o	-
Aliphatic Hydrocarbons		+	o
Alcohol	30%	+	+
Alcohol concentrate		-	-
Aluminium sulphate	10%	+	
Formic acid	30%	-	o
Ammonia	5%	-	+
Ammonia	25%	-	+
Aniline		-	-
Aromatic hydrocarbons		-	-
Arsenic acid		+	+
Ether		-	-
Caustic potash		-	
Benzene		-	-
Beer		+	+
Blood		+	+
Bromic acid		-	-
Calcium Chloride		+	+
Chloroform		-	-
Chlorophenol		-	-
Chromic acid	40%	o	o
Diesel fuel		o	+
Dioxane		-	-
Acetic acid	5%	+	o
Acetic acid	30%	+	-
Ethyl acetate (ester)		-	-
Ethanol	30%	+	o
Ethanol	50%	+	-
Ethyl acetate		-	-
Ethyl alcohol		+	o
Mineral fat		-	+
Vegetable fat		-	+
Animal fat		-	+
Glycerin		o	+
Glycol		+	+
Glysantin		+	+
Glycerine		o	+
Fuel oil		-	o
Caustic potash	30%	-	+
Potassium nitrate		+	+
milk of lime		o	+
Ketone		-	-
Saline solution	20%	+	+
Carbon dioxide		+	+
Carbon monoxide		+	+

Chemical Agents	max. concentration	PC	PMMA
Hydrocarbons		-	o
Lye		o	+
Lysol		-	-
Sea water		+	+
Methanol		-	-
Methyl chloride		-	-
Lactic acid, aqueous	10%	+	+
Mineral oils		+	+
Sodium hydroxide solution	2%	-	+
Sodium hydroxide solution	10%	-	+
Regular petrol (ROZ 91)		o	-
Petroleum ether		o	+
Phenol		-	-
Nitric acid	10%	+	+
Nitric acid	20%	o	o
Hydrochloric acid	5%	+	+
Hydrochloric acid	15%	+	+
Hydrochloric acid	20%	o	+
Sulfur dioxide		o	-
Sulphuric acid	30%	+	+
Sulphuric acid	50%	+	+
Sulphuric acid	70%	o	o
Hydrogen sulfide		+	+
Soap sud		+	+
Silicone oils		+	o
Soda bleach		+	+
Premium petrol		-	+
Turpentine oil		o	o
Carbon tetrachloride		-	-
Toluene		-	-
Trichloroethylene		-	-
Hydrogen peroxide	30%	o	-
Hydrogen sulfide		+	+
Xylene / Dimethylbenzene		-	-
Citric acid	20%	+	+

+ resistant

o partially resistant

- non-resistant



## MORE LUMINAIRES OF THIS PRODUCT FAMILY:



⊕ Planox



⊕ Planox PRO



⊕ Planox Tube

## HIGHEST PRODUCT AND CONSULTING QUALITY

### ⊕ RELIABILITY

We are your reliable partner. From the first idea to the implementation and far beyond, we accompany your project. Personal, passionate and individual. Thanks to our excellent expertise, top product quality and services such as lighting design, economic efficiency analysis and commissioning, we meet the high demands of all parties involved in the planning process.

- ✓ availability of BIM files
- ✓ easy and quick installation
- ✓ quality and long warranty

### ⊕ WARRANTY

The creation of high quality lighting solutions is our passion. Our products are developed and manufactured with the utmost care.

In addition to SMART TECHNOLOGY and EXCELLENT DESIGN, we are dedicated to manufacture luminaires of highest quality throughout the entire value chain through to After Sales Service.

Because of this, we confidently grant you a 5 years warranty on LED luminaires and 2 years warranty on emergency luminaires with effect of the date of invoice without prior registration of your project.

Warranty terms to be found under  
[rzb.de/en/service/led-luminaire-warranty](https://www.rzb.de/en/service/led-luminaire-warranty)

**RZB - FOR A TANGIBLE ADDED VALUE.**



**RZB**  
**Rudolf Zimmermann,**  
**Bamberg GmbH**

Rheinstr. 16  
96052 Bamberg  
Germany

Phone +49 951 79 09-374

[www.rzb-lighting.com](http://www.rzb-lighting.com)  
[export@rzb.eu](mailto:export@rzb.eu)

