

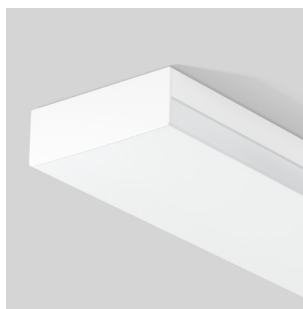
PLANADO

A CLASSIC LUMINAIRE REDEFINED

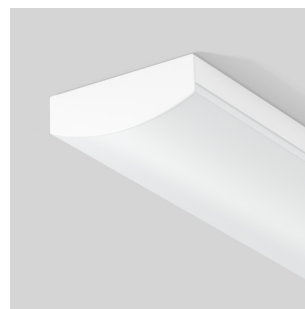
PLANADO

Overview

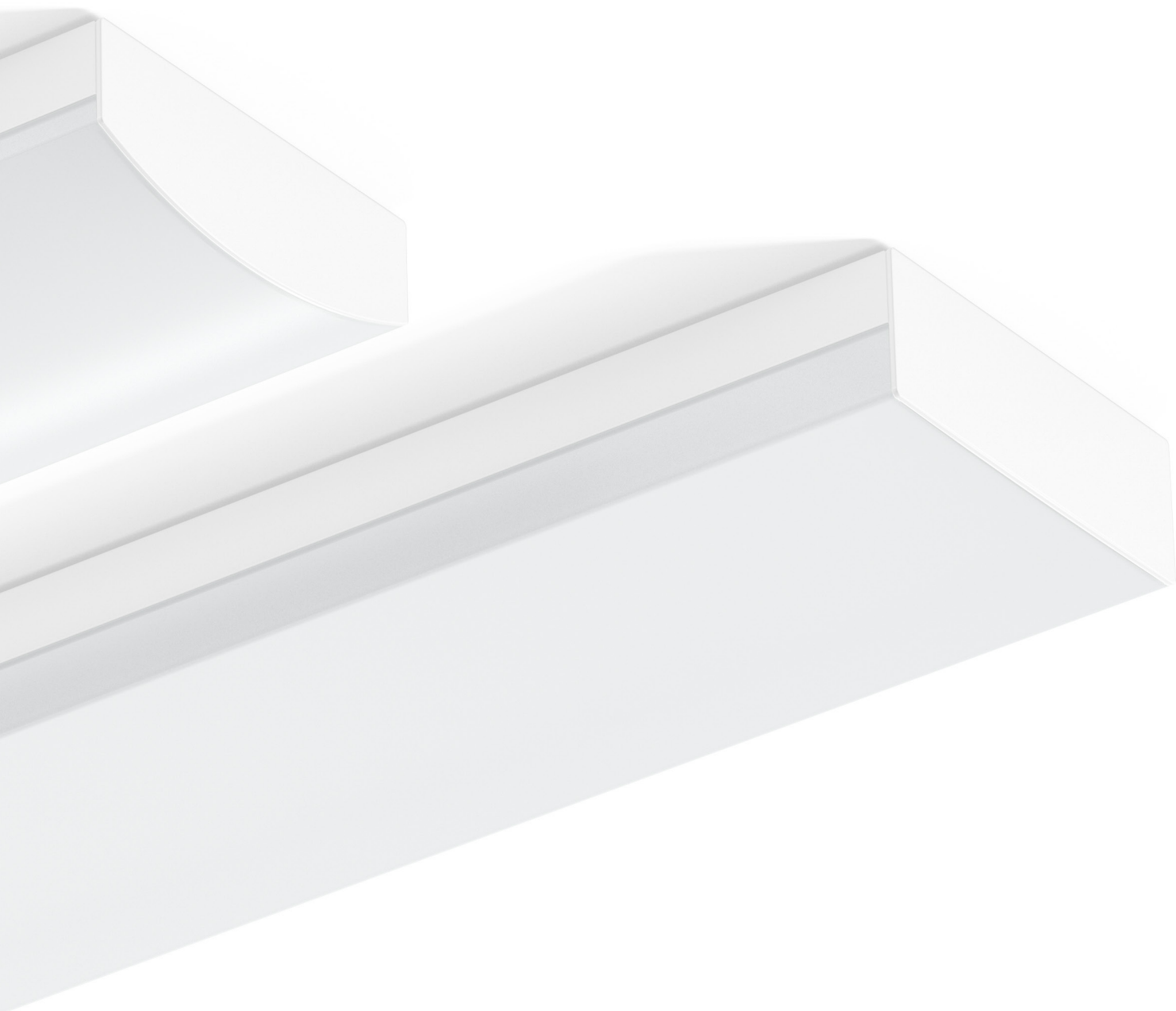
Ceiling and wall luminaires



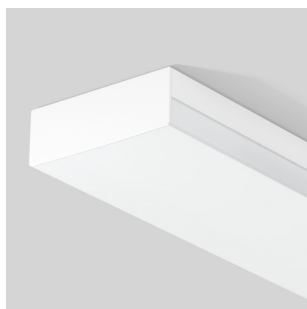
PLANADO
Page 10-11



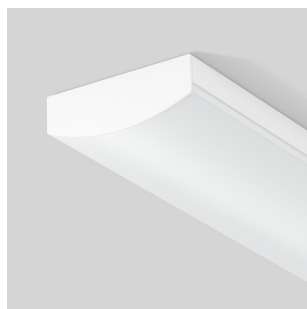
PLANADO
Page 12-13



Combined luminaires for escape route illumination



PLANADO
Page 14



PLANADO
Page 15

Luminaires for escape route identification



PLANADO
Page 16



PLANADO
Page 17



PLANADO

A classic luminaire redefined

This diffuser luminaire is absolutely the key to success

PLANADO is the perfect all-rounder and 1:1 substitute when replacing fluorescent lamps. The MultiLumen diffuser luminaire made of powder-coated sheet steel is equipped with a long-life, replaceable LED unit.

The surface mounted luminaire with through-wiring as standard also impresses with its high IP rating. It is therefore ideally suited for use in stairwells, corridors or canteens.

Angular or rounded - PLANADO is available with two different diffuser designs in three sizes each - there is a suitable variant even for the trickiest refurbishment case.

Architecture

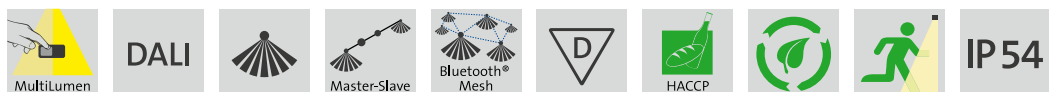
- ⊕ **Design-oriented:** Stylish and highly-efficient diffuser luminaire.
- ⊕ **Long service life:** Diffuser made of non-yellowing plastic (PMMA).
- ⊕ **Sustainable:** No disposable luminaire. Environmentally and resource-friendly thanks to replaceable components.
- ⊕ **Certified:** Qualified for use in the food and drink industry.
- ⊕ **Combinable:** Also available as an emergency luminaire in accordance with EN IEC 60598-2-22.

Lighting design

- ⊕ **Uniform:** 2-component optical system for homogeneous and soft illumination of the entire light-emitting surface.
- ⊕ **Protected:** IP54 for use in installations with extreme demands.
- ⊕ **Variable:** MultiLumen variants - 4 steps adjustable luminous flux.
- ⊕ **Smart Lighting:** HF motion detector with DALI and Bluetooth® interfaces for switching, dimming and networking from individual luminaires up to complex light installations..

Installation

- ⊕ **Advantage:** Perfectly fit as 1:1 replacement for refurbishment.
- ⊕ **Standard:** Through-wiring for additional luminaires.
- ⊕ **Easy to assemble:** Easy, no-fuss installation.



PLANADO

At a glance

IP54

Housing and end caps made of powder-coated sheet steel, without visible screws.

End cap with durable silicone foam seal.



No disposable luminaire thanks to replaceable components.



Qualified for use in the food and drink industry.



MultiLumen:
4 steps adjustable
luminous flux.

Diffuser made of non-yellowing plastic (PMMA), opal.



Also available as an emergency luminaire in accordance with EN ICE 60598-2-22.



Luminaires with limited surface temperature in accordance with DIN EN 60598-2-24 for use in environments in which a deposit of non-conductive dust on the luminaire can be expected.

2-component optical system for homogeneous and soft illumination of the entire light-emitting surface.



Variants with motion sensor.



The luminaire with sensor (master) controls several other luminaires without sensor (slave).



HF motion detector with integrated corridor function.

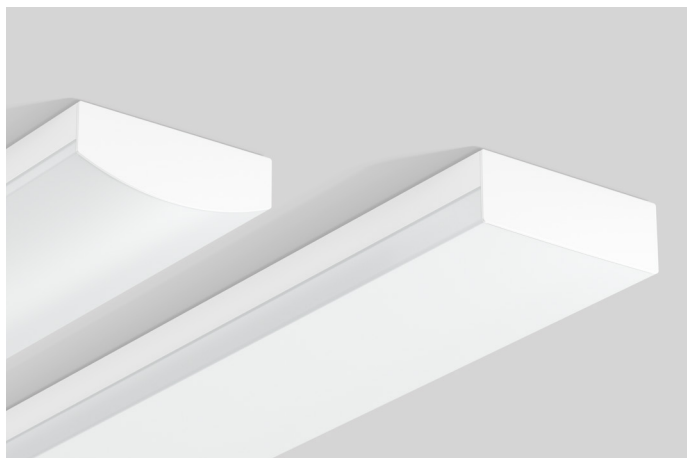
HF motion detector with **Bluetooth® interfaces** and DALI broadcast interfaces for switching, dimming and networking from individual luminaires. **Mesh sensors** create a wireless connection between each other. This allows for flexible configuration via smartphone or tablet.



The corridor function allows the luminaires to be configured so that they have a residual brightness of 10% when no more movement is detected.

PLANADO

My strengths in detail



Flat or curved? That is the question here

There are two different shapes to choose from - the classically curved diffuser luminaire or the linear straight-lined one. The specially matched 2-component optical system ensures homogeneous and soft illumination of the entire light-emitting surface with both shapes, thus providing pleasantly uniform light in the room. Whether flat or curved - this decision is now up to you!



Nothing gets in

Thanks to its IP 54 protection rating, the Planado can also be used in installations with extreme demands. The internal spring catches and the durable silicone foam seal ensure that nothing can get into the luminaire.



Disposable? Not with me!

Thanks to the removable and replaceable rack with LED board and driver, each component of the luminaire can be exchanged and replaced individually. This is not only easy on the budget, but also on our environment and resources.



Photometrics

- ⊕ Luminous efficiency up to 137 lm/W.
- ⊕ Luminaire flux up to 7400 lm.
- ⊕ Colour temperature 3000 K and 4000 K.
- ⊕ Colour rendering index Ra > 80.
- ⊕ UGR < 22 to < 25.
- ⊕ Symmetrical light distribution.
- ⊕ LED rated life 50000 h (L80/B10).
- ⊕ Colour consistency within 3-steps MacAdam (3 SDCM).
- ⊕ 1:1 substitute for fluorescent lamps.







Ceiling and wall luminaires | PLANADO

Type of protection: **IP 54** ceiling mounting, **IP 50** wall mounting

Protection class: I

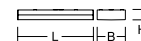
Impact protection: IK05

Housing and end caps made of sheet steel, powder coated. Rectangular diffuser made of non-yellowing plastic (PMMA), opal. Specially matched 2-component optical system for homogeneous and soft illumination of the entire light-emitting surface. End caps with hidden screws, with permanently dimensionally stable silicone foam seal. Driver integrated. Replaceable LED unit.

⚠ Luminaires with limited surface temperature in accordance with DIN EN 60598-2-24 for use in environments in which a deposit of non-conductive dust on the luminaire can be expected.

Available colour: 2 = white

MultiLumen: 4 steps adjustable luminous flux. Factory setting is the highest luminous flux.



Comparison LED vs. conventional lamps

LED 10 W ≈

2 x 18 W T26 (52 W Psys)

LED 17 W ≈

3 x 18 W T26 (78 W Psys)

LED 25 W ≈

2 x 36 W T26 (86 W Psys)

LED 38 W ≈

3 x 36 W T26 (129 W Psys)

LED 42 W ≈

2 x 58 W T26 (134 W Psys)

LED 57 W ≈

3 x 58 W T26 (201 W Psys)

Reference number	Dimensions [mm]	Light colour	Luminous flux [lm]	System power [W]	System efficiency* [lm/W]	UGR	Lighting Control
Ceiling and wall luminaires							
Length L 600 mm							
312621.002 *	L 600, B 160, H 58	830	1250...2050	10...17	129	21,8...23,5	on/off
312621.002.76	L 600, B 160, H 58	830	2050	17	121	23,5	DALI
312621.002.1 *	L 600, B 160, H 58	840	1300...2100	10...17	133	21,9...23,6	on/off
312621.002.1.76	L 600, B 160, H 58	840	2100	17	124	23,6	DALI
Length L 1200 mm							
312622.002 *	L 1200, B 160, H 58	830	3150...4750	25...38	131	22,6...24	on/off
312622.002.76	L 1200, B 160, H 58	830	4750	38	125	24	DALI
312622.002.1 *	L 1200, B 160, H 58	840	3300...4950	25...38	136	22,7...24,1	on/off
312622.002.1.76	L 1200, B 160, H 58	840	4950	38	130	24,1	DALI
Length L 1500 mm							
312623.002 *	L 1500, B 160, H 58	830	5500...7150	42...57	131	23,8...24,7	on/off
312623.002.76	L 1500, B 160, H 58	830	7150	57	125	24,7	DALI
312623.002.1 *	L 1500, B 160, H 58	840	5700...7400	42...57	136	23,9...24,8	on/off
312623.002.1.76	L 1500, B 160, H 58	840	7400	57	130	24,8	DALI

* **MultiLumen:** Specification of the lowest and highest possible lumen output. You will find more detailed information on www.rzb-lighting.com.

Ceiling and wall luminaires | PLANADO - Movement sensor

Type of protection: **IP 54** ceiling mounting, **IP 50** wall mounting

Protection class: I

Impact protection: IK05

Housing and end caps made of sheet steel, powder coated. Rectangular diffuser made of non-yellowing plastic (PMMA), opal. Specially matched 2-component optical system for homogeneous and soft illumination of the entire light-emitting surface. End caps with hidden screws, with permanently dimensionally stable silicone foam seal. Driver integrated. Replaceable LED unit.

▽ Luminaires with limited surface temperature in accordance with DIN EN 60598-2-24 for use in environments in which a deposit of non-conductive dust on the luminaire can be expected.

Available colour: 2 = white

MultiLumen: 4 steps adjustable luminous flux. Factory setting is the highest luminous flux.

Functional parameters of the motion detector for ceiling mounting up to 4.0 m or wall mounting up to 2.5 m:

- HF detector 5.8 GHz with integrated corridor function.
- Detection angle 30°-150°.
- Detection range up to 6 m radial, depending on mounting situation and diffuser.
- Hold time, daylight threshold and sensitivity adjustable via app.
- Sensors can be networked via Bluetooth®.
- As master luminaire switchable up to 400 W (resistive load), 300 VA (LED).

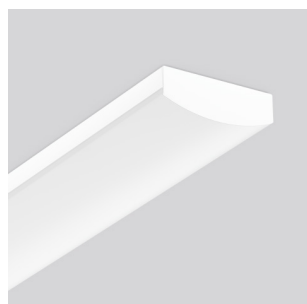
Reference number	Dimensions [mm]	Light colour	Luminous flux [lm]	System power [W]	System efficiency* [lm/W]	UGR	Lighting Control
Ceiling and wall luminaires with integrated movement sensor							
Length L 600 mm							
312621.002.19 *	L 600, B 160, H 58	830	1250...2050	11...18	119	21,8...23,5	on/off
312621.002.76.19	L 600, B 160, H 58	830	2050	18	114	23,5	DALI
312621.002.1.19 *	L 600, B 160, H 58	840	1300...2100	11...18	123	21,9...23,6	on/off
312621.002.1.76.19	L 600, B 160, H 58	840	2100	18	117	23,6	DALI
Length L 1200 mm							
312622.002.19 *	L 1200, B 160, H 58	830	3150...4750	26...39	127	22,6...24	on/off
312622.002.76.19	L 1200, B 160, H 58	830	4750	39	122	24	DALI
312622.002.1.19 *	L 1200, B 160, H 58	840	3300...4950	26...39	132	22,7...24,1	on/off
312622.002.1.76.19	L 1200, B 160, H 58	840	4950	39	127	24,1	DALI
Length L 1500 mm							
312623.002.19 *	L 1500, B 160, H 58	830	5500...7150	43...58	128	23,8...24,7	on/off
312623.002.76.19	L 1500, B 160, H 58	830	7150	58	123	24,7	DALI
312623.002.1.19 *	L 1500, B 160, H 58	840	5700...7400	43...58	133	23,9...24,8	on/off
312623.002.1.76.19	L 1500, B 160, H 58	840	7400	58	128	24,8	DALI

* **MultiLumen:** Specification of the lowest and highest possible lumen output. You will find more detailed information on www.rzb-lighting.com.



PLANADO

Product overview



Ceiling and wall luminaires | PLANADO

Type of protection: **IP 54** ceiling mounting, **IP 50** wall mounting

Protection class: I

Impact protection: IK05

Housing and end caps made of sheet steel, powder coated. Curved diffuser made of non-yellowing plastic (PMMA), opal. Specially matched 2-component optical system for homogeneous and soft illumination of the entire light-emitting surface. End caps with hidden screws, with permanently dimensionally stable silicone foam seal. Driver integrated. Replaceable LED unit.

⚠ Luminaires with limited surface temperature in accordance with DIN EN 60598-2-24 for use in environments in which a deposit of non-conductive dust on the luminaire can be expected.

Available colour: 2 = white

MultiLumen: 4 steps adjustable luminous flux. Factory setting is the highest luminous flux.



Comparison LED vs. conventional lamps

LED 10 W ≈
2 x 18 W T26 (52 W Psys)

LED 17 W ≈
3 x 18 W T26 (78 W Psys)

LED 25 W ≈
2 x 36 W T26 (86 W Psys)

LED 38 W ≈
3 x 36 W T26 (129 W Psys)

LED 42 W ≈
2 x 58 W T26 (134 W Psys)

LED 57 W ≈
3 x 58 W T26 (201 W Psys)

Reference number	Dimensions [mm]	Light colour	Luminous flux [lm]	System power [W]	System efficiency* [lm/W]	UGR	Lighting Control
Ceiling and wall luminaires							
Length L 600 mm							
312624.002 *	L 600, B 160, H 58	830	1200...2050	10...17	125	21,5...23,3	on/off
312624.002.76	L 600, B 160, H 58	830	2050	17	121	23,3	DALI
312624.002.1 *	L 600, B 160, H 58	840	1250...2050	10...17	129	21,6...23,3	on/off
312624.002.1.76	L 600, B 160, H 58	840	2050	17	121	23,3	DALI
Length L 1200 mm							
312625.002 *	L 1200, B 160, H 58	830	3100...4600	25...38	124	22,4...23,8	on/off
312625.002.76	L 1200, B 160, H 58	830	4600	38	121	23,8	DALI
312625.002.1 *	L 1200, B 160, H 58	840	3200...4800	25...38	128	22,5...23,9	on/off
312625.002.1.76	L 1200, B 160, H 58	840	4800	38	126	23,9	DALI
Length L 1500 mm							
312626.002 *	L 1500, B 160, H 58	830	5350...6900	42...57	127	23,5...24,4	on/off
312626.002.76	L 1500, B 160, H 58	830	6900	57	121	24,4	DALI
312626.002.1 *	L 1500, B 160, H 58	840	5550...7200	42...57	132	23,6...24,5	on/off
312626.002.1.76	L 1500, B 160, H 58	840	7200	57	126	24,5	DALI

* **MultiLumen:** Specification of the lowest and highest possible lumen output. You will find more detailed information on www.rzb-lighting.com.

Price Category 21

Ceiling and wall luminaires | PLANADO - Movement sensor

Type of protection: **IP 54** ceiling mounting, **IP 50** wall mounting

Protection class: I

Impact protection: IK05

Housing and end caps made of sheet steel, powder coated. Curved diffuser made of non-yellowing plastic (PMMA), opal. Specially matched 2-component optical system for homogeneous and soft illumination of the entire light-emitting surface. End caps with hidden screws, with permanently dimensionally stable silicone foam seal. Driver integrated. Replaceable LED unit.

⚠ Luminaires with limited surface temperature in accordance with DIN EN 60598-2-24 for use in environments in which a deposit of non-conductive dust on the luminaire can be expected.

Available colour: 2 = white

MultiLumen: 4 steps adjustable luminous flux. Factory setting is the highest luminous flux.



Functional parameters of the motion detector for ceiling mounting up to 4.0 m or wall mounting up to 2.5 m:

- HF detector 5.8 GHz with integrated corridor function.
- Detection angle 30°-150°.
- Detection range up to 6 m radial, depending on mounting situation and diffuser.
- Hold time, daylight threshold and sensitivity adjustable via app.
- Sensors can be networked via Bluetooth®.
- As master luminaire switchable up to 400 W (resistive load), 300 VA (LED).

Reference number	Dimensions [mm]	Light colour	Luminous flux [lm]	System power [W]	System efficiency* [lm/W]	UGR	Lighting Control
Ceiling and wall luminaires with integrated movement sensor							Price Category 21
Length L 600 mm							
312624.002.19 *	L 600, B 160, H 58	830	1200...2050	11...18	115	21,5...23,3	on/off
312624.002.76.19	L 600, B 160, H 58	830	2050	18	114	23,3	DALI
312624.002.1.19 *	L 600, B 160, H 58	840	1250...2050	11...18	119	21,6...23,3	on/off
312624.002.1.76.19	L 600, B 160, H 58	840	2050	18	114	23,3	DALI
Length L 1200 mm							
312625.002.19 *	L 1200, B 160, H 58	830	3100...4600	26...39	119	22,4...23,8	on/off
312625.002.76.19	L 1200, B 160, H 58	830	4600	39	118	23,8	DALI
312625.002.1.19 *	L 1200, B 160, H 58	840	3200...4800	26...39	124	22,5...23,9	on/off
312625.002.1.76.19	L 1200, B 160, H 58	840	4800	39	123	23,9	DALI
Length L 1500 mm							
312626.002.19 *	L 1500, B 160, H 58	830	5350...6900	43...58	124	23,5...24,4	on/off
312626.002.76.19	L 1500, B 160, H 58	830	6900	58	119	24,4	DALI
312626.002.1.19 *	L 1500, B 160, H 58	840	5550...7200	43...58	129	23,6...24,5	on/off
312626.002.1.76.19	L 1500, B 160, H 58	840	7200	58	124	24,5	DALI

* **MultiLumen:** Specification of the lowest and highest possible lumen output. You will find more detailed information on www.rzb-lighting.com.

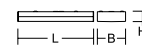
PLANADO

Product overview | Emergency lighting



Ceiling and wall luminaires | PLANADO

Type of protection: IP 54 Ceiling mounting, IP 50 Wall mounting
Protection class: I



For escape route illumination

Housing and end caps made of sheet steel, powder coated. Rectangular diffuser made of non-yellowing plastic (PMMA), opal. Specially matched 2-component optical system for homogeneous and soft illumination of the entire light-emitting surface. End caps with hidden screws, with permanently dimensionally stable silicone foam seal. Driver integrated. Replaceable LED unit. Suitable for through-wiring.

▼ Luminaires with limited surface temperature in accordance with DIN EN 60598-2-24 for use in environments in which a deposit of non-conductive dust on the luminaire can be expected.

Available colour: 2 = white

Self-contained emergency luminaires

Voltage type: AC

Automatic self test in all standard versions.

Operating mode: Can either be connected in non-maintained power mode (BS) or in maintained power mode (DS).

Luminaires for central battery system

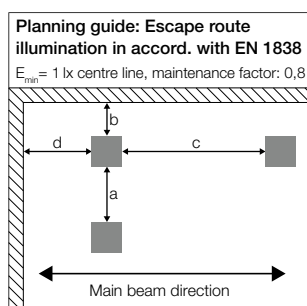
Voltage type: AC/DC



Reference number	Dimensions [mm]	Light colour	Luminous flux [lm]	Luminous flux emergency [lm]	System power [W]	Battery	⌚ [h]	Monitoring
Self-contained emergency luminaires								
Price Category 23								
652613.002 *	L 320, B 160, H 59	840	550	440	6,4	LiFePO4	1, 3, 8	Autotest
672613.002.04	L 320, B 160, H 59	840	590	310	7,5	LiFePO4	3	MultiDigit
672613.002.07	L 320, B 160, H 59	840	590	310	7,5	LiFePO4	3	DALI-Sibe
672614.002.04	L 320, B 160, H 59	840	590	140	7,6	LiFePO4	8	MultiDigit
672614.002.07	L 320, B 160, H 59	840	590	140	7,6	LiFePO4	8	DALI-Sibe

Luminaires for central battery system								
Price Category 24								
672609.002	L 320, B 160, H 59	840	600	600	5,1	without battery		Standard
672609.002.89	L 320, B 160, H 59	840	600	600	6,1	without battery		AC-Control

* Specification of luminaire flux emergency refers to 3 h rated operating time. You will find more detailed information on www.rzb-lighting.com.



652613.002					
Luminous flux emergency: 440 lm Following values are indicated in m					
h	a	b	c	d	
2,5	9,8	3,9	11,3	4,4	
3,0	10,5	4,1	12,0	4,6	
3,5	11,1	4,3	12,6	4,8	
4,0	11,6	4,4	13,1	4,9	

672613.002.X					
Luminous flux emergency: 310 lm Following values are indicated in m					
h	a	b	c	d	
2,5	8,8	3,5	10,1	3,9	
3,0	9,4	3,6	10,6	4,0	
3,5	9,8	3,7	11,1	4,1	
4,0	10,2	3,7	11,4	4,1	

672614.002.X					
Luminous flux emergency: 140 lm Following values are indicated in m					
h	a	b	c	d	
2,5	6,7	2,5	7,5	2,7	
3,0	7,0	2,4	7,8	2,7	
3,5	7,1	2,3	7,9	2,6	
4,0	7,1	2,0	7,8	2,3	

672609.002					
Luminous flux emergency: 600 lm Following values are indicated in m					
h	a	b	c	d	
2,5	10,7	4,3	12,5	4,9	
3,0	11,6	4,6	13,4	5,2	
3,5	12,3	4,8	14,0	5,4	
4,0	12,9	5,0	14,6	5,6	

Ceiling and wall luminaires | PLANADO

Type of protection: **IP 54** Ceiling mounting, **IP 50** Wall mounting
Protection class: I

For escape route illumination

Housing and end caps made of sheet steel, powder coated. Curved diffuser made of non-yellowing plastic (PMMA), opal. Specially matched 2-component optical system for homogeneous and soft illumination of the entire light-emitting surface. End caps with hidden screws, with permanently dimensionally stable silicone foam seal. Driver integrated. Replaceable LED unit. Suitable for through-wiring.

⚠ Luminaires with limited surface temperature in accordance with DIN EN 60598-2-24 for use in environments in which a deposit of non-conductive dust on the luminaire can be expected.

Available colour: 2 = white

Self-contained emergency luminaires

Voltage type: AC

Automatic self test in all standard versions.

Operating mode: Can either be connected in non-maintained power mode (BS) or in maintained power mode (DS).

Luminaires for central battery system

Voltage type: AC/DC



Reference number	Dimensions [mm]	Light colour	Luminous flux [lm]	Luminous flux emergency [lm]	System power [W]	Battery	⌚ [h]	Monitoring
Self-contained emergency luminaires								
						Price Category 23		
652615.002 *	L 320, B 160, H 58	840	550	440	6,4	LiFePO4	1, 3, 8	Autotest
672615.002.04	L 320, B 160, H 58	840	590	310	7,5	LiFePO4	3	MultiDigit
672615.002.07	L 320, B 160, H 58	840	590	310	7,5	LiFePO4	3	DALI-Sibe
672616.002.04	L 320, B 160, H 58	840	590	140	7,6	LiFePO4	8	MultiDigit
672616.002.07	L 320, B 160, H 58	840	590	140	7,6	LiFePO4	8	DALI-Sibe

Luminaires for central battery system							Price Category 24
672610.002	L 320, B 160, H 58	840	600	600	5,1	without battery	Standard
672610.002.89	L 320, B 160, H 58	840	600	600	6,1	without battery	AC-Control

* Specification of luminaire flux emergency refers to 3 h rated operating time. You will find more detailed information on www.rzb-lighting.com.

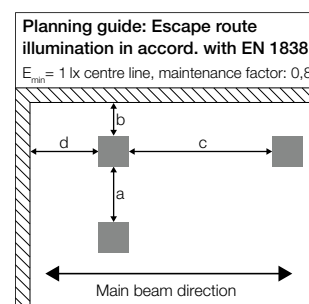


652615.002					
Luminous flux emergency: 440 lm Following values are indicated in m					
h	a	b	c	d	
2,5	10,4	4,2	11,2	4,4	
3,0	11,2	4,4	11,9	4,7	
3,5	11,9	4,6	12,9	4,9	
4,0	12,4	4,8	13,1	5,0	

672615.002.X					
Luminous flux emergency: 310 lm Following values are indicated in m					
h	a	b	c	d	
2,5	9,4	3,7	10,0	3,9	
3,0	10,0	3,9	10,6	4,1	
3,5	10,6	4,0	11,1	4,2	
4,0	11,0	4,1	11,5	4,3	

672616.002.X					
Luminous flux emergency: 140 lm Following values are indicated in m					
h	a	b	c	d	
2,5	7,2	2,7	7,6	2,8	
3,0	7,6	2,7	7,9	2,8	
3,5	7,8	2,7	8,1	2,8	
4,0	7,8	2,5	8,1	2,6	

672610.002					
Luminous flux emergency: 600 lm Following values are indicated in m					
h	a	b	c	d	
2,5	11,4	4,6	12,3	4,9	
3,0	12,3	4,9	13,2	5,2	
3,5	13,1	5,2	13,9	5,5	
4,0	13,8	5,4	14,6	5,7	



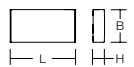
PLANADO

Product overview | Emergency lighting



Wall luminaires | PLANADO

Type of protection: IP 50
Protection class: I



For escape route identification

Housing and end caps made of sheet steel, powder coated. Rectangular diffuser made of non-yellowing plastic (PMMA), opal. End caps with hidden screws, with permanently dimensionally stable silicone foam seal. Driver integrated. Replaceable LED unit. Suitable for through-wiring. 4 legends for escape route identification included.

⚠ Luminares with limited surface temperature in accordance with DIN EN 60598-2-24 for use in environments in which a deposit of non-conductive dust on the luminaire can be expected.

Available colour: 2 = white

Self-contained emergency luminaires

Voltage type: AC

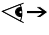

Automatic self test in all standard versions.

Operating mode: Can either be connected in non-maintained power mode (BS) or in maintained power mode (DS).

Luminaires for central battery system

Voltage type: AC/DC



Reference number	Dimensions [mm]	 [m]	System power [W]	Battery	 [h]	Monitoring	€ gross without VAT
Self-contained emergency luminaires							Price Category 23
672617.002	L 320, B 160, H 59	30	3	LiFePO4	3	Autotest	224,00
672617.002.04	L 320, B 160, H 59	30	3,1	LiFePO4	3	MultiDigit	285,00
672617.002.07	L 320, B 160, H 59	30	3,1	LiFePO4	3	DALI-Sibe	295,00
672619.002	L 320, B 160, H 59	30	3,1	LiFePO4	8	Autotest	224,00
672619.002.04	L 320, B 160, H 59	30	3,1	LiFePO4	8	MultiDigit	285,00
672619.002.07	L 320, B 160, H 59	30	3,1	LiFePO4	8	DALI-Sibe	295,00
Luminaires for central battery system							Price Category 24
672611.002	L 320, B 160, H 59	30	2,3	without battery		Standard	154,00
672611.002.89	L 320, B 160, H 59	30	3,2	without battery		AC-Control	239,00

Wall luminaires | PLANADO

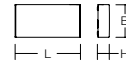
Type of protection: IP 50
Protection class: I

For escape route identification

Housing and end caps made of sheet steel, powder coated. Curved diffuser made of non-yellowing plastic (PMMA), opal. End caps with hidden screws, with permanently dimensionally stable silicone foam seal. Driver integrated. Replaceable LED unit. Suitable or through-wiring. 4 legends for escape route identification included.

⚠ Luminaires with limited surface temperature in accordance with DIN EN 60598-2-24 for use in environments in which a deposit of non-conductive dust on the luminaire can be expected.

Available colour: 2 = white



Self-contained emergency luminaires

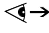

Voltage type: AC

Automatic self test in all standard versions.

Operating mode: Can either be connected in non-maintained power mode (BS) or in maintained power mode (DS).

Luminaires for central battery system

Voltage type: AC/DC

Reference number	Dimensions [mm]	 [m]	System power [W]	Battery	 [h]	Monitoring	€ gross without VAT
Self-contained emergency luminaires							Price Category 23
672618.002	L 320, B 160, H 58	30	3	LiFePO4	3	Autotest	224,00
672618.002.04	L 320, B 160, H 58	30	3,1	LiFePO4	3	MultiDigit	285,00
672618.002.07	L 320, B 160, H 58	30	3,1	LiFePO4	3	DALI-Sibe	295,00
672620.002	L 320, B 160, H 58	30	3,1	LiFePO4	8	Autotest	224,00
672620.002.04	L 320, B 160, H 58	30	3,1	LiFePO4	8	MultiDigit	285,00
672620.002.07	L 320, B 160, H 58	30	3,1	LiFePO4	8	DALI-Sibe	295,00
Luminaires for central battery system							Price Category 24
672612.002	L 320, B 160, H 58	30	2,3	without battery		Standard	154,00
672612.002.89	L 320, B 160, H 58	30	3,2	without battery		AC-Control	239,00



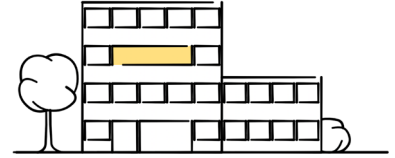
LIGHT MANAGEMENT SYSTEMS

Overview



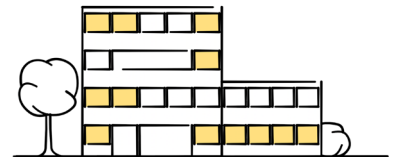
light control +³ Economy Multi DALI

The unbeatable price/performance winner for smaller installations. The system combines simple commissioning via smartphone, low wiring effort and flexible configuration and is therefore ideal for **group offices, conference rooms and classrooms**. Programmable buttons and sensors can also be integrated via DALI connections in order to achieve even greater energy savings. The system has an integrated timer and can therefore be used to set up HCL.



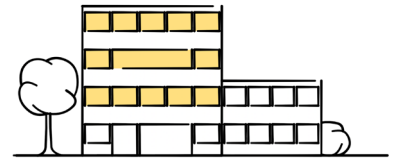
Casambi smart+free

The wireless light management system for maximum functions and configuration options. Casambi smart+free solutions are perfect for **residential buildings, shop und hotel**, as 3-wire cabling is enough - also suitable as a module for subsequent installation into existing luminaires. The module is already integrated into luminaires with the article number ending .730. You can configure the system to your individual needs due to the wide range of accessories from the Casambi ecosystem. The integration here is very intuitive and can be completed by users without prior knowledge in just a few minutes.



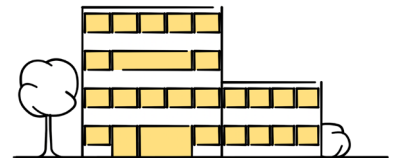
light control +³ Professional Control

The system is suitable for complex applications in **warehouses, room and floor control and production areas**; daylight dependant control, dynamic light control to circadian daylight simulation in Human Centric Lighting (HCL) and monitoring of energy data. In addition, the systems can be networked to make luminaire data available to other systems. light control+³ Professional is the perfect entry level lighting system for the IoT world.



light control +³ Professional Customised






Lighting management can integrate with your **building management system in office buildings, production halls and terminals**. In this way, you can combine trades such as heating, sanitation, ventilation, security and blinds with lighting in one control system and even add additional functions such as monitoring, predictive maintenance and energy reporting if desired. Other additional functions can be programmed and integrated as per your individual requirements. Our support team would be happy to help in this regard, from planning up to commissioning.



You still haven't found the right system for you?

Along with the systems shown here, we would also be happy to create a customised control system for your project.

Please contact your designated on-site sales employee or contact our Planning department via e-mail at lms@rzb-leuchten.de or by phone at +49 951/79 09-396.

	light control + ³ Economy Multi DALI 	Casambi smart+free 	light control + ³ Professional Control 	light control + ³ Professional Customised 
Application	Group offices Conference rooms Classrooms	Residential buildings Shop Hotel	Warehouses Floor control Production areas	Office buildings Production halls Terminals
Integration of indoor / outdoor lighting	✓	✓	✓	✓
Can be combined with				
Communication	wired	wireless	wired	wired + wireless
Infrastructure requirements	L, N, PE, DA, DA (5 wires cable)	L, N, PE (3 wires cable)	L, N, PE, DA, DA (5 wires cable)	L, N, PE, DA, DA (5 wires cable)
Commissioning	by electrician	by electrician	RZB service technician	RZB service technician
Configuration	App, Plug & Play	App, Remote access	PC-Tool, Remote access	RZB service technician
Operation	Switches, Buttons, App	Switches, Buttons, App	Switches, Buttons, App, Web access	Switches, Buttons, PC, Web access
Number of luminaires (1 EB) (Number of luminaires depends on the number of EB in the luminaire)	32	1	256	any
Number of sensors (presence, motion)	4	1 per module	50	any
Dimmable	✓	✓	✓	✓
Motion / presence detection	✓	✓	✓	✓
Daylight-dependent control	✓	✓	✓	✓
Scenes / Groups	✓	✓	✓	✓
Timer / Calendar functions	✓	✓	✓	✓
HCL / Tunable White	✓	✓	✓	✓
RGB		✓	✓	✓
Network integration		✓	✓	✓
Remote access: programming, operation, maintenance		✓	✓	✓
IoT ready		✓	✓	✓
Predictive maintenance, monitoring, read out luminaire data			✓	✓
Beacon for indoor navigation, tracking, asset management		✓		✓
Integration of additional sensors (CO ₂ , temperature, gas...)				✓
Integration of other trades (heating, air conditioning, security)				✓
Order number with extension	.76 (DALI)	.76 (DALI) .730 (smart+free)	.76 (DALI)	.76 (DALI)



FURTHER LUMINAIRES, MATCHING THIS SERIES:



⊕ PLANOX ECO



⊕ LESS IS MORE 50



⊕ LINEDO



⊕ FLAT SLIM square

HIGHEST PRODUCT AND CONSULTING QUALITY

⊕ RELIABILITY

We are your reliable partner. From the first idea to the implementation and far beyond, we accompany your project. Personal, passionate and individual. Thanks to our excellent expertise, top product quality and services such as light planning, economic efficiency analysis and commissioning, we meet the high demands of all parties involved in the planning process.

- ✓ availability of BIM files
- ✓ easy and quick installation
- ✓ quality and long warranty

⊕ WARRANTY

The creation of high quality lighting solutions is our passion. Our products are developed and manufactured with the utmost care.

In addition to SMART TECHNOLOGY and EXCELLENT DESIGN, we are dedicated to manufacture luminaires of highest quality throughout the entire value chain through to After Sales Service.

Because of this, we confidently grant you a 5 years warranty on LED luminaires and 2 years warranty on emergency luminaires with effect of the date of invoice without prior registration of your project.

Warranty terms to be found under

[rzb.de/en/service/led-luminaire-warranty](https://www.rzb.de/en/service/led-luminaire-warranty)

RZB - FOR A TANGIBLE ADDED VALUE.



RZB
Rudolf Zimmermann,
Bamberg GmbH

Rheinstr. 16
96052 Bamberg
Germany

Phone +49 951 79 09-374

www.rzb-lighting.com
export@rzb.eu

