



# TX-MOVE

MULTIFUNCTIONAL SURFACE-MOUNTED AND RECESSED PROJECTOR  
FOR AREA LIGHTING

# TX-MOVE

Overview



one lamp  
Page 10



two lamps  
Page 11



**one lamp**  
Page 12



**two lamps**  
Page 13







# TX-MOVE

Multifunctional surface-mounted and recessed projector for area lighting

## POWERFUL (WIDE-AREA) PROJECTOR!

Flat and flexible: the 90° swivelling TX-Move MultiLumen track and recessed projector shows wares of all kinds in their best light. Whether in a supermarket, boutique, car showroom or DIY store, TX-Move should be your first choice for wide-area, uniform ambient lighting or directional illumination of large areas. The projector's minimalist design lets it merge into the background and instead shine a light on what's important: product displays, gondola heads, advertising and information boards, and salesroom aisle zones.

And that's not all – the multi-talented TX-Move is also an enlightening choice in the office, hospitality and museum sectors.

## Architecture

- ⊕ **Uniform:** For general, uniform illumination of large areas and directional illumination of large signposts and shop shelves.
- ⊕ **Versatile:** High-efficiency LED units with optimum light control thanks to clear plastic (PC) lens optics or flush-mounted opal diffuser made of non-yellowing PMMA.
- ⊕ **Advantageous:** Unobtrusive effect thanks to flat design and also predestined for low ceiling heights.
- ⊕ **Sustainable:** Not a disposable luminaire. Environment and resource-friendly thanks to replaceable components.

## Lighting design

- ⊕ **Colourfast:** Best colour rendering with CRI>90 for fresh produce and coloured textiles.
- ⊕ **Reduced:** Special microstructures in the specially developed lens optics reduce the yellow seam to an absolute minimum.
- ⊕ **Anti-glare:** Versions with UGR≤19 can also be used for checkout areas.
- ⊕ **Reliable planning:** Various beam variants: narrow, medium, wide, asymmetrical as standard, others on request.

## Installation

- ⊕ **Variable:** MultiLumen - 3-step adjustable luminous flux.
- ⊕ **Easy installation:** 356° rotatable for optimal illumination.
- ⊕ **Flexible:** 90° swivelling for optimal illumination, scaling of the swivel angle.



# TX-MOVE

Technology

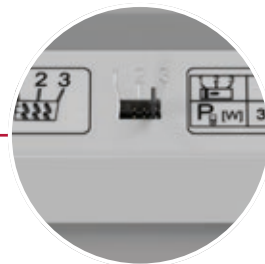
356° rotatable for  
optimal illumination.

Highly efficient LED units with  
optimum light control thanks to  
precise lens optics.



Very good glare control.  
Versions with 30° beam angle UGR<19.

Special microstructures in the  
specially developed lens optics  
reduce yellow fringing to an  
absolute minimum.

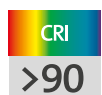


**MultiLumen version:**  
3 steps adjustable luminous flux.  
This allows the customer to set  
the luminous flux flexibly on site.

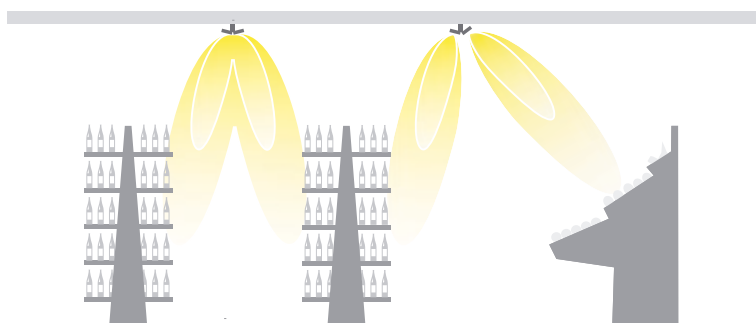


No disposable luminaire  
thanks to interchangeable  
components.

Scaling of the swivel angle, 90°  
swivelling for optimal illumination.



Best colour rendering, versions with  
2700K Ra>90, particularly suitable for  
fresh products (fruit / vegetables, baked  
goods) or also for coloured textiles and  
objects.



# TX-MOVE


## Recessed projectors

TX-Move is an insert luminaire for grid ceilings module 600 or module 625, which can be flexibly positioned anywhere in the ceiling frame.

The individually adapted ceiling panel available on site can simply be on the frame of the luminaire housing.



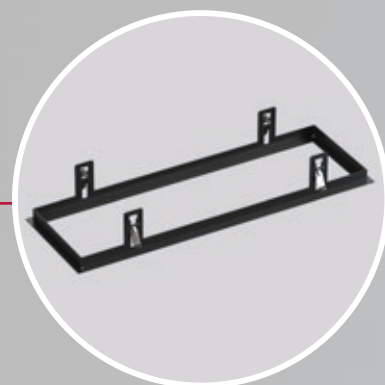




Inner cover prevents  
view into the false ceiling.

## ACCESSORIES

Mounting frame for installation  
in suspended ceilings.











## PHOTOMETRICS

- ⊕ Luminous efficiency up to 167 lm/W.
- ⊕ Luminaire flux up to 10,400 lm.
- ⊕ Light colour 830, 840 and 927.
- ⊕ Special microstructures in the specially developed lens optics reduce the yellow seam to an absolute minimum.
- ⊕ LED rated life 50,000 h (L80/B10).
- ⊕ Colour consistency within 3-steps MacAdam (3 SDCM).



# TX-MOVE

## Product overview



### Comparison LED vs. conventional lamps

#### Diffuser opal

##### LED 18 W ≈

1 x 28 W T16 (31 W Psys)

##### LED 19 W ≈

1 x 49 W T16 (53 W Psys)

##### LED 33 W ≈

2 x 28 W T16 (61 W Psys)

##### LED 40 W ≈

2 x 49 W T16 (106 W Psys)

#### Optic lenses

##### LED 18 W ≈

1 x 28 W T16 (31 W Psys)

##### LED 19 W ≈

1 x 39 W T16 (41 W Psys)

##### LED 33 W ≈

1 x 49 W T16 (53 W Psys)

##### LED 40 W ≈

2 x 39 W T16 (82 W Psys)



### Surface mounted projectors | TX-Move

Type of protection: IP 20

Protection class: I

Impact protection: IK03 (Diffuser: opal), IK04 (Optic lenses)

Housing: sheet steel, powder-coated. Rotation range: 356°. Swivel range: 90°. Consistent alignment possible with visible tilt scale. High-efficiency LED units with optimum light control thanks to clear plastic (PC) lens optics or flush-mounted opal diffuser made of non-yellowing PMMA. Driver integrated. With multi-adapter for 3-circuit tracks or with adapter for RZB 3-circuit DALI tracks.

**MultiLumen:** 3 steps adjustable luminous flux. Factory setting is the highest luminous flux.

Available colours (X): 2 = white, 3 = black, 4 = silver coloured



Reference number	Dimensions [mm]	Lamp	Light colour	Luminous flux [lm]	System power [W]	Max. luminous-efficiency [lm/W]	α [°]	dim-able
------------------	-----------------	------	--------------	--------------------	------------------	---------------------------------	-------	----------

#### Surface mounted projector with multi adaptor for 3-circuit tracks 230 V

Price Category 21

##### one lamp

##### Diffuser: plastic (PMMA), opal

742160.00X.2	L 569, B 57, H 77	LED	927	1700...2950	18...33	95	112	on/off
742160.00X	L 569, B 57, H 77	LED	830	2350...4500	19...40	124	112	on/off
742160.00X.1	L 569, B 57, H 77	LED	840	2450...4800	19...40	129	112	on/off

##### Optic lenses - asymmetrical

742159.00X.2	L 569, B 57, H 77	LED	927	1900...3300	18...33	106		on/off
742159.00X	L 569, B 57, H 77	LED	830	2600...5000	19...40	137		on/off
742159.00X.1	L 569, B 57, H 77	LED	840	2750...5250	19...40	145		on/off

##### Optic lenses - symmetrical

742157.00X.2	L 569, B 57, H 77	LED	927	1950...3350	18...33	109	30	on/off
742158.00X.2	L 569, B 57, H 77	LED	927	2000...3450	18...33	112	85	on/off
742157.00X	L 569, B 57, H 77	LED	830	2700...5250	19...40	143	30	on/off
742158.00X	L 569, B 57, H 77	LED	830	2750...5300	19...40	145	85	on/off
742157.00X.1	L 569, B 57, H 77	LED	840	2850...5450	19...40	150	30	on/off
742158.00X.1	L 569, B 57, H 77	LED	840	2900...5550	19...40	153	85	on/off

#### Surface mounted projector with DALI adapter only for RZB 3-circuit DALI track 230 V

Price Category 21

##### one lamp

##### Diffuser: plastic (PMMA), opal

742160.00X.2.76	L 569, B 57, H 77	LED	927	1700...2950	18...33	95	112	DALI
742160.00X.76	L 569, B 57, H 77	LED	830	2350...4500	19...40	124	112	DALI
742160.00X.1.76	L 569, B 57, H 77	LED	840	2450...4800	19...40	129	112	DALI

##### Optic lenses - asymmetrical

742159.00X.2.76	L 569, B 57, H 77	LED	927	1900...3300	18...33	106		DALI
742159.00X.76	L 569, B 57, H 77	LED	830	2600...5000	19...40	137		DALI
742159.00X.1.76	L 569, B 57, H 77	LED	840	2750...5250	19...40	145		DALI

##### Optic lenses - symmetrical

742157.00X.2.76	L 569, B 57, H 77	LED	927	1950...3400	18...33	109	30	DALI
742158.00X.2.76	L 569, B 57, H 77	LED	927	2000...3450	18...33	112	85	DALI
742157.00X.76	L 569, B 57, H 77	LED	830	2700...5200	19...40	143	30	DALI
742158.00X.76	L 569, B 57, H 77	LED	830	2750...5300	19...40	145	85	DALI
742157.00X.1.76	L 569, B 57, H 77	LED	840	2850...5450	19...40	150	30	DALI
742158.00X.1.76	L 569, B 57, H 77	LED	840	2900...5550	19...40	153	85	DALI

**MultiLumen:** Specification of the lowest and highest possible lumen output. You will find more detailed information on [www.rzb-lighting.com](http://www.rzb-lighting.com).

### Surface mounted projectors | TX-Move

Type of protection: IP 20

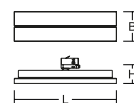
Protection class: I

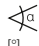
Impact protection: IK03 (Diffuser: opal), IK04 (Optic lenses)

Housing: sheet steel, powder-coated. Rotation range: 356°. Swivel range: 2 x 90°. Consistent alignment possible with visible tilt scale. High-efficiency LED units with optimum light control thanks to clear plastic (PC) lens optics or flush-mounted opal diffuser made of non-yellowing PMMA. Driver integrated. With multi-adapter for 3-circuit tracks or with adapter for RZB 3-circuit DALI tracks.

**MultiLumen:** 3 steps adjustable luminous flux. Factory setting is the highest luminous flux.

Available colours (X): 2 = white, 3 = black, 4 = silver coloured



Reference number	Dimensions [mm]	Lamp	Light colour	Luminous flux [lm]	System power [W]	Max. luminous-efficiency [lm/W]	 [°]	dim-able
<b>Surface mounted projector with multi adaptor for 3-circuit tracks 230 V</b>								
<b>two lamps</b>								
<b>Diffuser: plastic (PMMA), opal</b>								
742164.00X.2	L 569, B 119, H 75	LED	927	3600...5550	38...62	95	112	on/off
742164.00X	L 569, B 119, H 75	LED	830	4900...8150	41...73	120	112	on/off
742164.00X.1	L 569, B 119, H 75	LED	840	5250...8750	41...73	129	112	on/off
<b>Optic lenses - asymmetrical</b>								
742163.00X.2	L 569, B 119, H 75	LED	927	4000...6200	38...62	106		on/off
742163.00X	L 569, B 119, H 75	LED	830	5500...9050	41...73	135		on/off
742163.00X.1	L 569, B 119, H 75	LED	840	5900...9750	41...73	144		on/off
<b>Optic lenses - symmetrical</b>								
742161.00X.2	L 569, B 119, H 75	LED	927	4250...6600	38...62	112	30	on/off
742162.00X.2	L 569, B 119, H 75	LED	927	4300...6650	38...62	114	85	on/off
742161.00X	L 569, B 119, H 75	LED	830	5800...9600	41...73	142	30	on/off
742162.00X	L 569, B 119, H 75	LED	830	5850...9700	41...73	143	85	on/off
742161.00X.1	L 569, B 119, H 75	LED	840	6250...10400	41...73	153	30	on/off
742162.00X.1	L 569, B 119, H 75	LED	840	6300...10400	41...73	154	85	on/off

<b>Surface mounted projector with DALI adapter only for RZB 3-circuit DALI track 230 V</b>								
<b>two lamps</b>								
<b>Diffuser: plastic (PMMA), opal</b>								
742164.00X.2.76	L 569, B 119, H 75	LED	927	3550...5500	38...62	94	112	DALI
742164.00X.76	L 569, B 119, H 75	LED	830	4900...8150	41...73	120	112	DALI
742164.00X.1.76	L 569, B 119, H 75	LED	840	5250...8750	41...73	129	112	DALI
<b>Optic lenses - asymmetrical</b>								
742163.00X.2.76	L 569, B 119, H 75	LED	927	3950...6150	38...62	104		DALI
742163.00X.76	L 569, B 119, H 75	LED	830	5500...9050	41...73	135		DALI
742163.00X.1.76	L 569, B 119, H 75	LED	840	5900...9750	41...73	144		DALI
<b>Optic lenses - symmetrical</b>								
742161.00X.2.76	L 569, B 119, H 75	LED	927	4200...6500	38...62	111	30	DALI
742162.00X.2.76	L 569, B 119, H 75	LED	927	4200...6550	38...62	111	85	DALI
742161.00X.76	L 569, B 119, H 75	LED	830	5800...9600	41...73	142	30	DALI
742162.00X.76	L 569, B 119, H 75	LED	830	5850...9700	41...73	143	85	DALI
742161.00X.1.76	L 569, B 119, H 75	LED	840	6250...10400	41...73	153	30	DALI
742162.00X.1.76	L 569, B 119, H 75	LED	840	6300...10400	41...73	154	85	DALI

**MultiLumen:** Specification of the lowest and highest possible lumen output. You will find more detailed information on [www.rzb-lighting.com](http://www.rzb-lighting.com).

### Comparison LED vs. conventional lamps

#### Diffuser opal

**LED 38 W ≈**

2 x 35 W T16 (75 W Psys)

**LED 41 W ≈**

3 x 28 W T16 (92 W Psys)

**LED 62 W ≈**

3 x 35 W T16 (119 W Psys)

**LED 73 W ≈**

4 x 35 W T16 (150 W Psys)

#### Optic lenses

**LED 38 W ≈**

2 x 28 W T16 (61 W Psys)

**LED 41 W ≈**

2 x 35 W T16 (75 W Psys)

**LED 62 W ≈**

3 x 28 W T16 (92 W Psys)

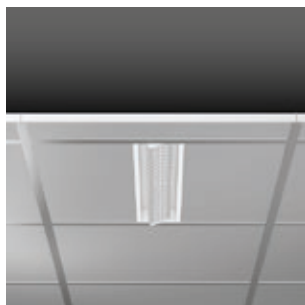
**LED 73 W ≈**

4 x 35 W T16 (150 W Psys)



# TX-MOVE

## Product overview



### Comparison LED vs. conventional lamps

#### Diffuser opal

##### LED 16 W ≈

1 x 28 W T16 (31 W Psys)

##### LED 18 W ≈

1 x 49 W T16 (53 W Psys)

##### LED 31 W ≈

2 x 28 W T16 (61 W Psys)

##### LED 39 W ≈

2 x 49 W T16 (106 W Psys)

#### Optic lenses

##### LED 16 W ≈

1 x 28 W T16 (31 W Psys)

##### LED 18 W ≈

1 x 39 W T16 (41 W Psys)

##### LED 31 W ≈

1 x 49 W T16 (53 W Psys)

##### LED 39 W ≈

2 x 39 W T16 (82 W Psys)

### Recessed projectors | TX-Move

Type of protection: IP 20

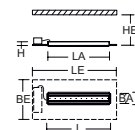
Protection class: I


Impact protection: IK03 (Diffuser: opal), IK04 (Optic lenses)

Housing: sheet steel, powder-coated. Swivel range: 90°. High-efficiency LED units with optimum light control thanks to clear plastic (PC) lens optics or flush-mounted opal diffuser made of non-yellowing PMMA. Connected converter included in separate gearbox. Suitable for through-wiring.

**MultiLumen:** 3 steps adjustable luminous flux. Factory setting is the highest luminous flux.

Available colours (X): 2 = white, 3 = black, 4 = silver coloured



Reference number	Dimensions [mm]	Lamp	Light colour	Luminous flux [lm]	System power [W]	 α [°]	dimming
<b>Lay-in luminaires for grid ceilings - one lamp</b>							
<b>for module 600</b>							
<b>Diffuser: plastic (PMMA), opal</b>							
901727.00X.2	L 597, B 116, H 39, HE 100	LED	927	1700...3050	16...31	107	112 on/off
901727.00X.2.76	L 597, B 116, H 39, HE 100	LED	927	1700...3050	16...31	107	112 DALI
901727.00X	L 597, B 116, H 39, HE 100	LED	830	2450...4700	18...39	137	112 on/off
901727.00X.76	L 597, B 116, H 39, HE 100	LED	830	2450...4700	18...39	137	112 DALI
901727.00X.1	L 597, B 116, H 39, HE 100	LED	840	2550...4900	18...39	142	112 on/off
901727.00X.1.76	L 597, B 116, H 39, HE 100	LED	840	2550...4900	18...39	142	112 DALI
<b>Optic lenses - asymmetrical</b>							
901726.00X.2	L 597, B 116, H 39, HE 100	LED	927	1950...3350	16...31	122	on/off
901726.00X.2.76	L 597, B 116, H 39, HE 100	LED	927	1950...3350	16...31	122	DALI
901726.00X	L 597, B 116, H 39, HE 100	LED	830	2700...5200	18...39	150	on/off
901726.00X.76	L 597, B 116, H 39, HE 100	LED	830	2700...5200	18...39	150	DALI
901726.00X.1	L 597, B 116, H 39, HE 100	LED	840	2800...5450	18...39	156	on/off
901726.00X.1.76	L 597, B 116, H 39, HE 100	LED	840	2800...5450	18...39	156	DALI
<b>Optic lenses - symmetrical</b>							
901724.00X.2	L 597, B 116, H 39, HE 100	LED	927	1950...3500	16...31	122	30 on/off
901724.00X.2.76	L 597, B 116, H 39, HE 100	LED	927	1950...3500	16...31	122	30 DALI
901725.00X.2	L 597, B 116, H 39, HE 100	LED	927	2000...3550	16...31	125	85 on/off
901725.00X.2.76	L 597, B 116, H 39, HE 100	LED	927	2000...3550	16...31	125	85 DALI
901724.00X	L 597, B 116, H 39, HE 100	LED	830	2800...5450	18...39	156	30 on/off
901724.00X.76	L 597, B 116, H 39, HE 100	LED	830	2800...5450	18...39	156	30 DALI
901725.00X	L 597, B 116, H 39, HE 100	LED	830	2850...5550	18...39	159	85 on/off
901725.00X.76	L 597, B 116, H 39, HE 100	LED	830	2850...5550	18...39	159	85 DALI
901724.00X.1	L 597, B 116, H 39, HE 100	LED	840	2950...5650	18...39	164	30 on/off
901724.00X.1.76	L 597, B 116, H 39, HE 100	LED	840	2950...5650	18...39	164	30 DALI
901725.00X.1	L 597, B 116, H 39, HE 100	LED	840	3000...5800	18...39	167	85 on/off
901725.00X.1.76	L 597, B 116, H 39, HE 100	LED	840	3000...5800	18...39	167	85 DALI
<b>for module 625</b>							
<b>Diffuser: plastic (PMMA), opal</b>							
901731.00X.2	L 622, B 116, H 39, HE 100	LED	927	1700...3050	16...31	107	112 on/off
901731.00X.2.76	L 622, B 116, H 39, HE 100	LED	927	1700...3050	16...31	107	112 DALI
901731.00X	L 622, B 116, H 39, HE 100	LED	830	2450...4700	18...39	137	112 on/off
901731.00X.76	L 622, B 116, H 39, HE 100	LED	830	2450...4700	18...39	137	112 DALI
901731.00X.1	L 622, B 116, H 39, HE 100	LED	840	2550...4900	18...39	142	112 on/off
901731.00X.1.76	L 622, B 116, H 39, HE 100	LED	840	2550...4900	18...39	142	112 DALI
<b>Optic lenses - asymmetrical</b>							
901730.00X.2	L 622, B 116, H 39, HE 100	LED	927	1950...3350	16...31	122	on/off
901730.00X.2.76	L 622, B 116, H 39, HE 100	LED	927	1950...3350	16...31	122	DALI
901730.00X	L 622, B 116, H 39, HE 100	LED	830	2700...5200	18...39	150	on/off
901730.00X.76	L 622, B 116, H 39, HE 100	LED	830	2700...5200	18...39	150	DALI
901730.00X.1	L 622, B 116, H 39, HE 100	LED	840	2800...5450	18...39	156	on/off
901730.00X.1.76	L 622, B 116, H 39, HE 100	LED	840	2800...5450	18...39	156	DALI
<b>Optic lenses - symmetrical</b>							
901728.00X.2	L 622, B 116, H 39, HE 100	LED	927	1950...3500	16...31	122	30 on/off
901728.00X.2.76	L 622, B 116, H 39, HE 100	LED	927	1950...3500	16...31	122	30 DALI
901729.00X.2	L 622, B 116, H 39, HE 100	LED	927	2000...3550	16...31	125	85 on/off
901729.00X.2.76	L 622, B 116, H 39, HE 100	LED	927	2000...3550	16...31	125	85 DALI
901728.00X	L 622, B 116, H 39, HE 100	LED	830	2800...5450	18...39	156	30 on/off
901728.00X.76	L 622, B 116, H 39, HE 100	LED	830	2800...5450	18...39	156	30 DALI
901729.00X	L 622, B 116, H 39, HE 100	LED	830	2850...5550	18...39	159	85 on/off
901729.00X.76	L 622, B 116, H 39, HE 100	LED	830	2850...5550	18...39	159	85 DALI
901728.00X.1	L 622, B 116, H 39, HE 100	LED	840	2950...5650	18...39	164	30 on/off
901728.00X.1.76	L 622, B 116, H 39, HE 100	LED	840	2950...5650	18...39	164	30 DALI
901729.00X.1	L 622, B 116, H 39, HE 100	LED	840	3000...5800	18...39	167	85 on/off
901729.00X.1.76	L 622, B 116, H 39, HE 100	LED	840	3000...5800	18...39	167	85 DALI

**MultiLumen:** Specification of the lowest and highest possible lumen output. You will find more detailed information on [www.rzb-lighting.com](http://www.rzb-lighting.com).

### Mounting frame for installation in suspended ceilings

Price Category 21

982866.00X	L 626, B 141, H 2, HEL 94	one lamp, for module 600
982868.00X	L 650, B 141, H 2, HEL 94	one lamp, for module 625





### Recessed projectors | TX-Move

Type of protection: IP 20

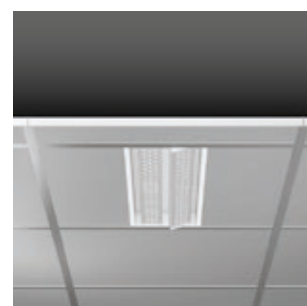
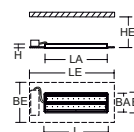
Protection class: I

Impact protection: IK03 (Diffuser: opal), IK04 (Optic lenses)

Housing: sheet steel, powder-coated. 2xSwivel range: 90°. High-efficiency LED units with optimum light control thanks to clear plastic (PC) lens optics or flush-mounted opal diffuser made of non-yellowing PMMA. Connected converter included in separate gearbox. Suitable for through-wiring.

**MultiLumen:** 3 steps adjustable luminous flux. Factory setting is the highest luminous flux.

Available colours (X): 2 = white, 3 = black, 4 = silver coloured



Reference number	Dimensions [mm]	Lamp	Light colour	Luminous flux [lm]	System power [W]						
<b>Lay-in luminaires for grid ceilings - two lamps</b>											<b>Price Category 21</b>
<b>for module 600</b>											
<b>Diffuser: plastic (PMMA), opal</b>											
901735.00X.2	L 597, B 190, H 39, HE 100	LED	927	3500...5850	32...62	110		112	on/off		
901735.00X.2.76	L 597, B 190, H 39, HE 100	LED	927	3500...5850	32...62	110		112	DALI		
901735.00X	L 597, B 190, H 39, HE 100	LED	830	4850...8450	35...68	139		112	on/off		
901735.00X.76	L 597, B 190, H 39, HE 100	LED	830	4850...8450	35...68	139		112	DALI		
901735.00X.1	L 597, B 190, H 39, HE 100	LED	840	4900...8750	35...68	140		112	on/off		
901735.00X.1.76	L 597, B 190, H 39, HE 100	LED	840	4900...8750	35...68	140		112	DALI		
<b>Optic lenses - asymmetrical</b>											
901734.00X.2	L 597, B 190, H 39, HE 100	LED	927	3850...6450	32...62	121			on/off		
901734.00X.2.76	L 597, B 190, H 39, HE 100	LED	927	3850...6450	32...62	121			DALI		
901734.00X	L 597, B 190, H 39, HE 100	LED	830	5250...9250	35...68	150			on/off		
901734.00X.76	L 597, B 190, H 39, HE 100	LED	830	5250...9250	35...68	150			DALI		
901734.00X.1	L 597, B 190, H 39, HE 100	LED	840	5350...9600	35...68	153			on/off		
901734.00X.1.76	L 597, B 190, H 39, HE 100	LED	840	5350...9600	35...68	153			DALI		
<b>Optic lenses - symmetrical</b>											
901732.00X.2	L 597, B 190, H 39, HE 100	LED	927	4000...6750	32...62	125	30		on/off		
901732.00X.2.76	L 597, B 190, H 39, HE 100	LED	927	4000...6750	32...62	125	30		DALI		
901733.00X.2	L 597, B 190, H 39, HE 100	LED	927	4050...6850	32...62	127	85		on/off		
901733.00X.2.76	L 597, B 190, H 39, HE 100	LED	927	4050...6850	32...62	127	85		DALI		
901732.00X	L 597, B 190, H 39, HE 100	LED	830	5500...9700	35...68	158	30		on/off		
901732.00X.76	L 597, B 190, H 39, HE 100	LED	830	5500...9700	35...68	158	30		DALI		
901733.00X	L 597, B 190, H 39, HE 100	LED	830	5600...9850	35...68	160	85		on/off		
901733.00X.76	L 597, B 190, H 39, HE 100	LED	830	5600...9850	35...68	160	85		DALI		
901732.00X.1	L 597, B 190, H 39, HE 100	LED	840	5600...10000	35...68	160	30		on/off		
901732.00X.1.76	L 597, B 190, H 39, HE 100	LED	840	5600...10000	35...68	160	30		DALI		
901733.00X.1	L 597, B 190, H 39, HE 100	LED	840	5700...10200	35...68	163	85		on/off		
901733.00X.1.76	L 597, B 190, H 39, HE 100	LED	840	5700...10200	35...68	163	85		DALI		
<b>for module 625</b>											
<b>Diffuser: plastic (PMMA), opal</b>											
901739.00X.2	L 622, B 190, H 39, HE 100	LED	927	3500...5850	32...62	110		112	on/off		
901739.00X.2.76	L 622, B 190, H 39, HE 100	LED	927	3500...5850	32...62	110		112	DALI		
901739.00X	L 622, B 190, H 39, HE 100	LED	830	4850...8450	35...68	139		112	on/off		
901739.00X.76	L 622, B 190, H 39, HE 100	LED	830	4850...8450	35...68	139		112	DALI		
901739.00X.1	L 622, B 190, H 39, HE 100	LED	840	4900...8750	35...68	140		112	on/off		
901739.00X.1.76	L 622, B 190, H 39, HE 100	LED	840	4900...8750	35...68	140		112	DALI		
<b>Optic lenses - asymmetrical</b>											
901738.00X.2	L 622, B 190, H 39, HE 100	LED	927	3850...6450	32...62	121			on/off		
901738.00X.2.76	L 622, B 190, H 39, HE 100	LED	927	3850...6450	32...62	121			DALI		
901738.00X	L 622, B 190, H 39, HE 100	LED	830	5250...9250	35...68	150			on/off		
901738.00X.76	L 622, B 190, H 39, HE 100	LED	830	5250...9250	35...68	150			DALI		
901738.00X.1	L 622, B 190, H 39, HE 100	LED	840	5350...9600	35...68	153			on/off		
901738.00X.1.76	L 622, B 190, H 39, HE 100	LED	840	5350...9600	35...68	153			DALI		
<b>Optic lenses - symmetrical</b>											
901736.00X.2	L 622, B 190, H 39, HE 100	LED	927	4000...6750	32...62	125	30		on/off		
901736.00X.2.76	L 622, B 190, H 39, HE 100	LED	927	4000...6750	32...62	125	30		DALI		
901737.00X.2	L 622, B 190, H 39, HE 100	LED	927	4050...6850	32...62	127	85		on/off		
901737.00X.2.76	L 622, B 190, H 39, HE 100	LED	927	4050...6850	32...62	127	85		DALI		
901736.00X	L 622, B 190, H 39, HE 100	LED	830	5500...9700	35...68	158	30		on/off		
901736.00X.76	L 622, B 190, H 39, HE 100	LED	830	5500...9700	35...68	158	30		DALI		
901737.00X	L 622, B 190, H 39, HE 100	LED	830	5600...9850	35...68	160	85		on/off		
901737.00X.76	L 622, B 190, H 39, HE 100	LED	830	5600...9850	35...68	160	85		DALI		
901736.00X.1	L 622, B 190, H 39, HE 100	LED	840	5600...10000	35...68	160	30		on/off		
901736.00X.1.76	L 622, B 190, H 39, HE 100	LED	840	5600...10000	35...68	160	30		DALI		
901737.00X.1	L 622, B 190, H 39, HE 100	LED	840	5700...10200	35...68	163	85		on/off		
901737.00X.1.76	L 622, B 190, H 39, HE 100	LED	840	5700...10200	35...68	163	85		DALI		

**MultiLumen:** Specification of the lowest and highest possible lumen output. You will find more detailed information on [www.rzb-lighting.com](http://www.rzb-lighting.com).

<b>Mounting frame for installation in suspended ceilings</b>											<b>Price Category 21</b>
982867.00X	L 626, B 214, H 2, HEL 94	two lamps, for module 600									
982869.00X	L 650, B 214, H 2, HEL 94	two lamps, for module 625									



### Comparison LED vs. conventional lamps

**Diffuser opal**

**LED 32 W ≈**

2 x 35 W T16 (75 W Psys)

**LED 35 W ≈**

3 x 28 W T16 (92 W Psys)

**LED 62 W ≈**

3 x 35 W T16 (119 W Psys)

**LED 68 W ≈**

4 x 35 W T16 (150 W Psys)

**Optic lenses**

**LED 32 W ≈**

2 x 28 W T16 (61 W Psys)

**LED 35 W ≈**

2 x 35 W T16 (75 W Psys)

**LED 62 W ≈**

3 x 28 W T16 (92 W Psys)

**LED 68 W ≈**

4 x 35 W T16 (150 W Psys)



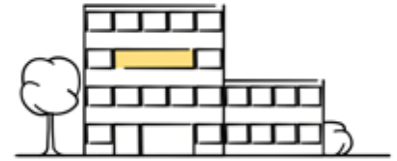
# LIGHT MANAGEMENT SYSTEMS

## Overview



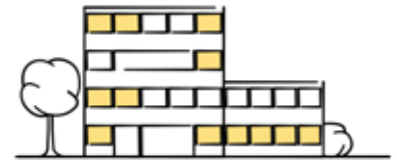
### light control +<sup>3</sup> Economy Multi DALI

The unbeatable price/performance winner for smaller installations. The system combines simple commissioning via smartphone, low wiring effort and flexible configuration and is therefore ideal for **group offices, conference rooms and classrooms**. Programmable buttons and sensors can also be integrated via DALI connections in order to achieve even greater energy savings. The system has an integrated timer and can therefore be used to set up HCL.



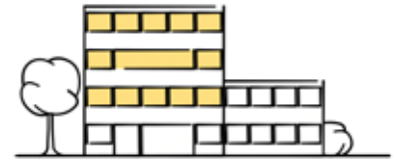
### Casambi smart+free

The wireless light management system for maximum functions and configuration options. Casambi smart+free solutions are perfect for **residential buildings, shop und hotel**, as 3-wire cabling is enough - also suitable as a module for subsequent installation into existing luminaires. The module is already integrated into luminaires with the article number ending .730. You can configure the system to your individual needs due to the wide range of accessories from the Casambi ecosystem. The integration here is very intuitive and can be completed by users without prior knowledge in just a few minutes.



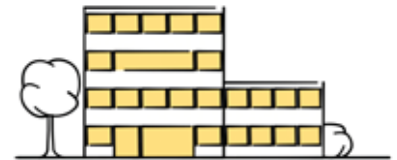
### light control +<sup>3</sup> Professional Control

The system is suitable for complex applications in **warehouses, room and floor control and production areas**; daylight dependant control, dynamic light control to circadian daylight simulation in Human Centric Lighting (HCL) and monitoring of energy data. In addition, the systems can be networked to make luminaire data available to other systems. light control+<sup>3</sup> Professional is the perfect entry level lighting system for the IoT world.



### light control +<sup>3</sup> Professional Customised




Lighting management can integrate with your **building management system** in **office buildings, production halls and terminals**. In this way, you can combine trades such as heating, sanitation, ventilation, security and blinds with lighting in one control system and even add additional functions such as monitoring, predictive maintenance and energy reporting if desired. Other additional functions can be programmed and integrated as per your individual requirements. Our support team would be happy to help in this regard, from planning up to commissioning.



### You still haven't found the right system for you?

Along with the systems shown here, we would also be happy to create a customised control system for your project.

Please contact your designated on-site sales employee or contact our Planning department via e-mail at [lms@rzb-leuchten.de](mailto:lms@rzb-leuchten.de) or by phone at +49 951 / 79 09-396.

	light control + <sup>3</sup> Economy Multi DALI 	Casambi smart+free 	light control + <sup>3</sup> Professional Control 	light control + <sup>3</sup> Professional Customised 
Application	Group offices Conference rooms Classrooms	Residential buildings Shop Hotel	Warehouses Floor control Production areas	Office buildings Production halls Terminals
Integration of indoor / outdoor lighting	✓	✓	✓	✓
Can be combined with				
Communication	wired	wireless	wired	wired + wireless
Infrastructure requirements	L, N, PE, DA, DA (5 wires cable)	L, N, PE (3 wires cable)	L, N, PE, DA, DA (5 wires cable)	L, N, PE, DA, DA (5 wires cable)
Commissioning	by electrician	by electrician	RZB service technician	RZB service technician
Configuration	App, Plug & Play	App, Remote access	PC-Tool, Remote access	RZB service technician
Operation	Switches, Buttons, App	Switches, Buttons, App	Switches, Buttons, App, Web access	Switches, Buttons, PC, Web access
Number of luminaires (1 EB) (Number of luminaires depends on the number of EB in the luminaire)	32	1	256	any
Number of sensors (presence, motion)	4	1 per module	50	any
Dimmable	✓	✓	✓	✓
Motion / presence detection	✓	✓	✓	✓
Daylight-dependent control	✓	✓	✓	✓
Scenes / Groups	✓	✓	✓	✓
Timer / Calendar functions	✓	✓	✓	✓
HCL / Tunable White	✓	✓	✓	✓
RGB		✓	✓	✓
Network integration		✓	✓	✓
Remote access: programming, operati- on, maintenance		✓	✓	✓
IoT ready		✓	✓	✓
Predictive maintenance, monitoring, read out luminaire data			✓	✓
Beacon for indoor navigation, tracking, asset management		✓		✓
Integration of additional sensors (CO <sub>2</sub> , temperature, gas...)				✓
Integration of other trades (heating, air conditioning, security)				✓
Order number with extension	.76 (DALI)	.76 (DALI) .730 (smart+free)	.76 (DALI)	.76 (DALI)





## FURTHER LUMINAIRES, MATCHING THIS SERIES:



⊕ Deecos S



⊕ Calido Clickbeam



⊕ Deecos R



⊕ Golas

## HIGHEST PRODUCT AND CONSULTING QUALITY

### ⊕ RELIABILITY

We are your reliable partner. From the first idea to the implementation and far beyond, we accompany your project. Personal, passionate and individual. Thanks to our excellent expertise, top product quality and services such as light planning, economic efficiency analysis and commissioning, we meet the high demands of all parties involved in the planning process.

- ✓ availability of BIM files
- ✓ easy and quick installation
- ✓ quality and long warranty

### ⊕ WARRANTY

The creation of high quality lighting solutions is our passion. Our products are developed and manufactured with the utmost care.

In addition to SMART TECHNOLOGY and EXCELLENT DESIGN, we are dedicated to manufacture luminaires of highest quality throughout the entire value chain through to After Sales Service.

Because of this, we confidently grant you a 5 years warranty on LED luminaires and 2 years warranty on emergency luminaires with effect of the date of invoice without prior registration of your project.

Warranty terms to be found under

[rzb.de/en/service/led-luminaire-warranty](https://www.rzb.de/en/service/led-luminaire-warranty)

**RZB - FOR A TANGIBLE ADDED VALUE.**



09.2022

**RZB**  
**Rudolf Zimmermann,**  
**Bamberg GmbH**

Rheinstr. 16  
96052 Bamberg  
Germany

Phone +49 951 7909-374

[www.rzb-lighting.com](http://www.rzb-lighting.com)  
[export@rzb.eu](mailto:export@rzb.eu)

#### Tip with added value:

The digital version of this publication contains **interactive links** that lead you from the article number directly to the web.



Member of **licht.de**