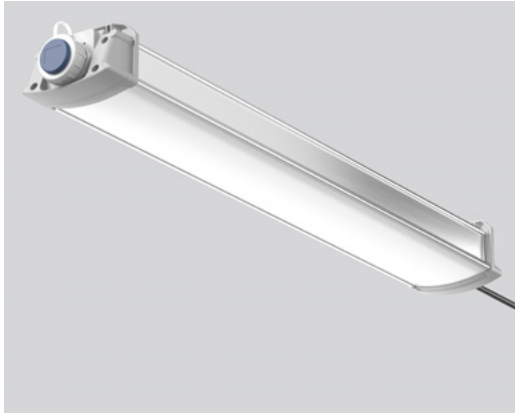


## Tent lights



## WISTARA

### Why was the product developed?

**Compact powerpackage:** put an end to cumbersome, heavy uplights - pure power in very small spaces

**Logistics miracle:** maximum luminous efficacy with minimal pack size

**Mobile reliability:** developed for fast use in locations that require absolute handling precision

### Which problems are solved by the luminaire?

**Lack of space resolved:** extremely short overall length, optimal for transport in emergency vehicles and transporters

**Less loads:** low weight, perfect for changing, mobile applications

**Uncompromising light distribution:** even in winding tunnels or large tents

**No stressful installation:** clever through-wiring and simple handling

### Product benefits

- + **Many variations:** available in three sizes
- + **Powerful:** luminous flux up to 18,000 lm
- + **Complex:** Multicolour/Multilumen, MES technology and emergency light version available
- + **Robust:** high type of protection IP65
- + **Expansion options:** integrated socket for installation of light chains



L 481, 716, 1002 mm



850

840

830



50000 h (L90)



5000 - 18000 lm

lm/W up to 160 lm/W



Multilumen



Multilumen EasySelect



IP65



IK08



Made in Germany



1:40 h, 400 lm

## Accessories



Strap

Available | Prices from €170.00