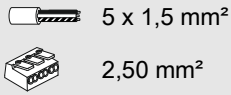


# INSTRUCTION

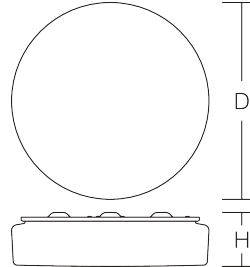
Flat Polymero R  
312799.002.76



~ 220 - 240 V 50/60 Hz IP 40 IK03



Umgebungstemperatur /  
temperature ambiante  
=> 5 °C ... + 35 °C



D 460, H 93

	$\Phi_{\text{Lm}}$ [lm]	$P_{\text{W}}$ [W]	$P_{\text{W}}$ [W]			
--	-------------------------	--------------------	--------------------	--	--	--

LED 4000 28 1 x 26 W

CCT [K]	CRI	RG	EEK			
---------	-----	----	-----	--	--	--

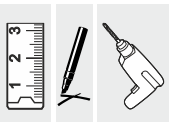
3000 80 RG 0 C

$I_{\text{max}}$ / $I_{\text{max}}/2$ / $t_{50}$	B10 [St.]	B16 [St.]	C10 [St.]	C16 [St.]	$\cos \varphi$
--	-----------	-----------	-----------	-----------	----------------

50 A / 10  $\mu$ s 28 47 36 56 0,9

$f_{\text{min}} - f_{\text{max}}$ [MHz]	$p_{\text{EIRP}}$ [mW]		
---	------------------------	--	--

13,553 – 13,567 0





Installation erfordert  
Elektro-Fachkraft!

Symbole nach ISO 7010



### Allgemeine Sicherheitshinweise

- Der elektrische Anschluss muss ordnungsgemäß nach geltenden Normen und den nationalen sowie internationalen Sicherheits- und Unfallverhütungsvorschriften erfolgen.
- Beschädigte Leuchten dürfen nicht betrieben werden.
- Keine Haftung für Schäden durch unsachgemäßen Einsatz.
- Bei Instandsetzung nur Originalteile verwenden.
- Tragfähigkeit der Decke und Befestigungselemente sicherstellen.

### Betrieb der Leuchte

- Die unzulässigen Umgebungstemperaturen reduzieren die Lebensdauer der Leuchte, im Extremfall droht der Frühausfall.
- Zur Vermeidung von EMV-Problemen die Durchgangsverdrahtung nicht entlang der Leuchtenverdrahtung führen.
- Steuereingänge von dimmbaren Leuchten mit handelsüblichen für Netzspannung geeigneten Leitungen anschließen.

### Manipulationen unserer Produkte sind unzulässig

Veränderung, Umarbeitung, Umkennzeichnung von Produkten sowie deren Verpackung sind unzulässig und verletzen u.a. unsere eingetragenen Warenzeichenrechte. Solche Modifikationen können technische Eigenschaften unserer Produkte negativ beeinflussen, diese zerstören und möglicherweise Folgeschäden an anderen Objekten verursachen. Für durch derartige Modifikationen verursachte Schäden kann der Hersteller in keinem Fall verantwortlich gemacht werden.



Installation requires  
a qualified electrician!

Symbols according  
to ISO 7010



### General Safety Information

- Electric connection must be appropriate according to all applicable standards and other national and international safety and accident prevention regulations.
- Damaged luminaires must not be operated.
- No liability is accepted for damages resulting from improper use.
- Use genuine parts only for repair.
- Ensure stability of the ceiling and fastening elements.

### Operation of the luminaire

- Exceeding the permissible ambient temperature will reduce the luminaire's lifecycle, resulting in premature failure in extreme cases.
- Avoid ESD problems by not routing feed-through wiring directly along the wiring of the luminaire.
- Connect control inputs of dimmable luminaires with standard cables suitable for power supply voltage.

### Manipulation of our products is not permitted

Modifications, reworking, re-labelling of products as well as their package is not permitted and infringes, amongst others, our registered trademark rights. Such modifications may affect technical properties of our products, damage them and possibly cause consequential damage to other objects. The manufacturer shall not be responsible under any circumstances for damage caused by such modifications.



 Bei Fragen zu unseren Symbolen, besuchen Sie folgende Webseite:  
If you have any questions about our signs, visit the following website:



[https://www.rzb.de/fileadmin/assets/downloads/PDF/RZB\\_Symbolklaerung.pdf](https://www.rzb.de/fileadmin/assets/downloads/PDF/RZB_Symbolklaerung.pdf)

**EEK** 

Dieses Produkt enthält eine Lichtquelle der Energieeffizienzklasse C entsprechend Verordnung (EU) 2019/2015

---

This product contains a light source of energy efficiency class C according to regulation (EU) No 2019/2015

 Jede zersprungene Schutzabdeckung ist zu ersetzen. DIN EN 60598

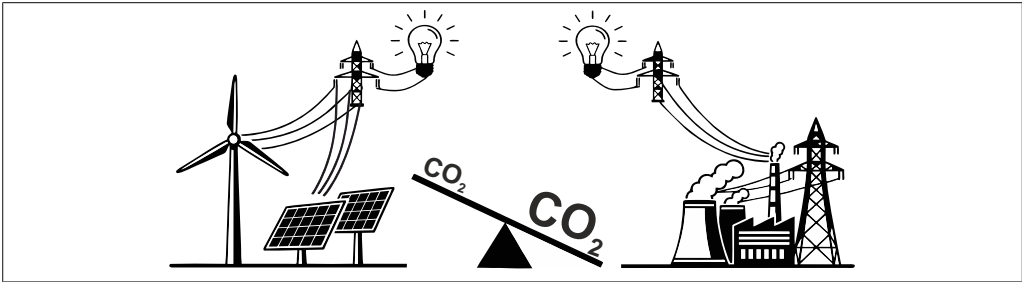
---

Replace any cracked protective shield. IEC DIN EN 60598

 Die Lichtquelle dieser Leuchte darf nur vom Hersteller oder einem von ihm beauftragten Servicetechniker oder einer vergleichbar qualifizierten Person ersetzt werden. DIN EN 60598-1 / IEC 60598-1

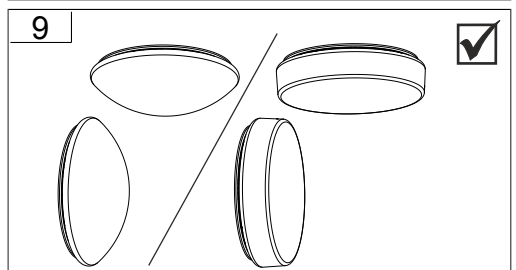
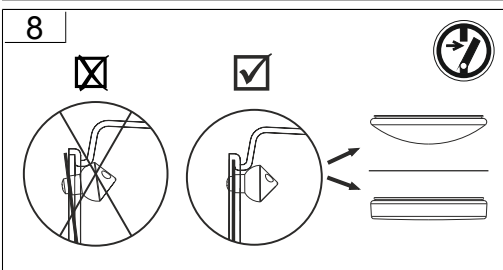
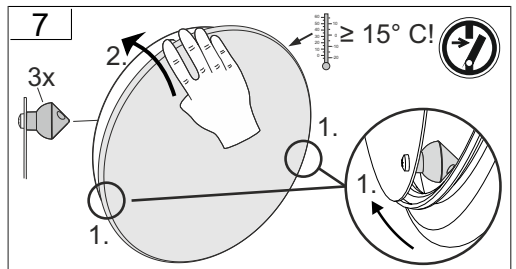
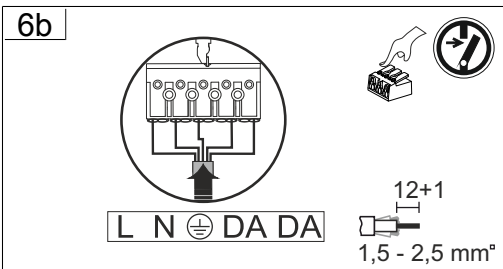
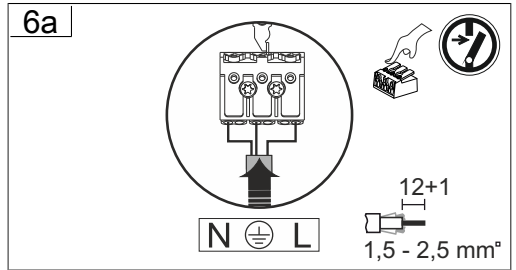
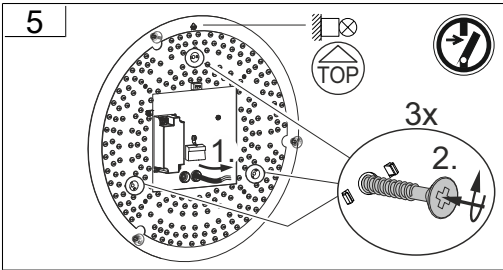
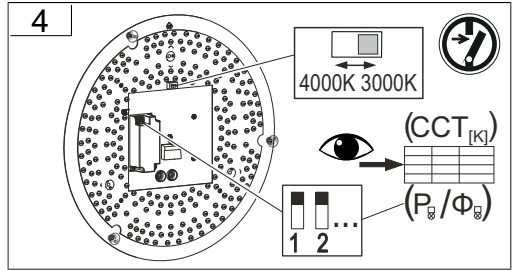
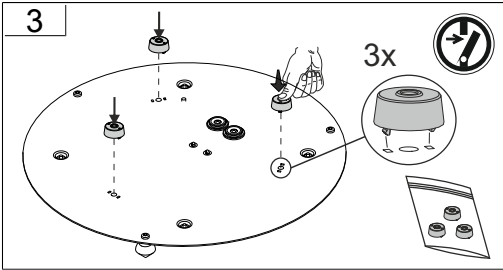
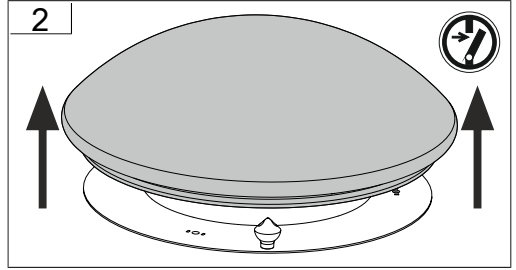
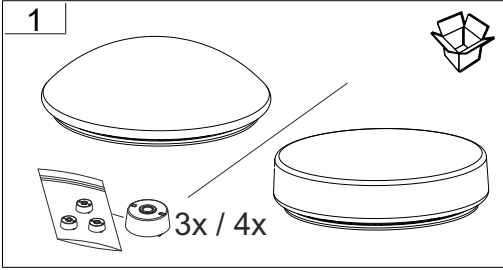
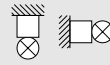
---

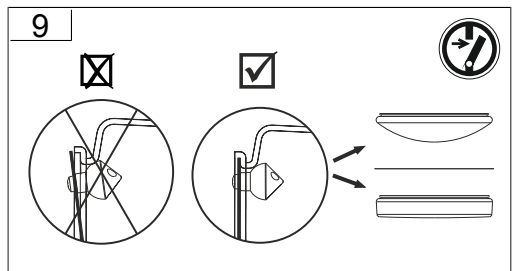
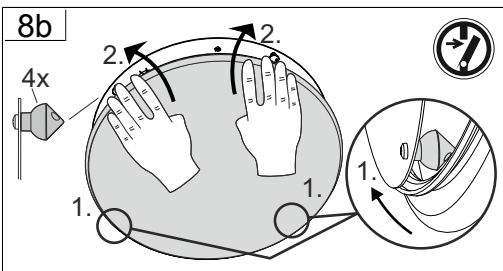
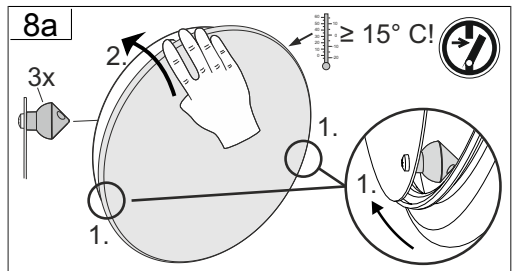
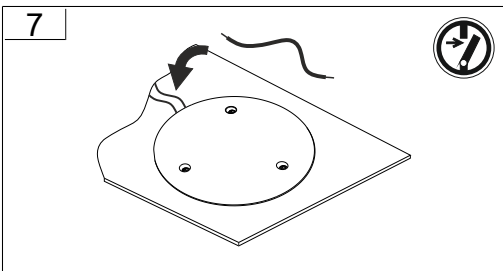
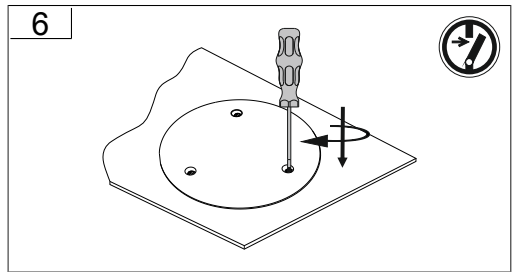
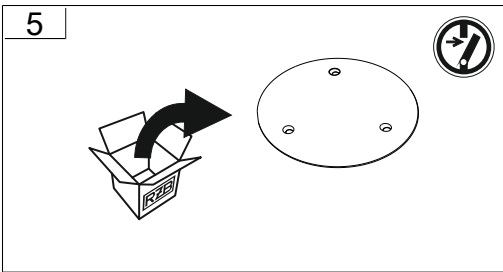
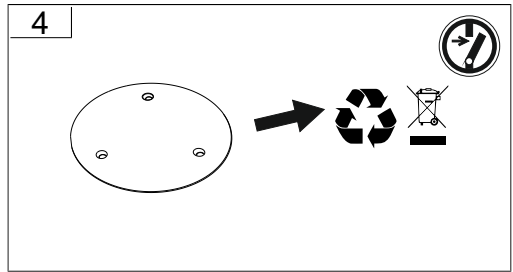
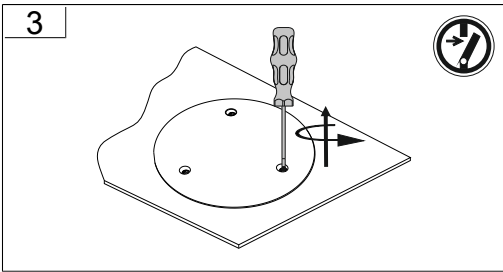
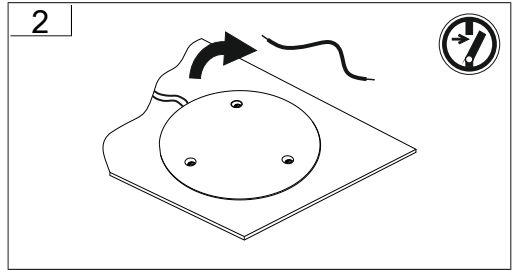
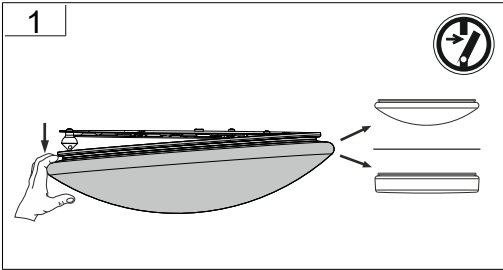
The light source contained in this luminaire shall only be replaced by the manufacturer or his service agent or a similar qualified person. DIN EN 60598-1 / IEC 60598-1

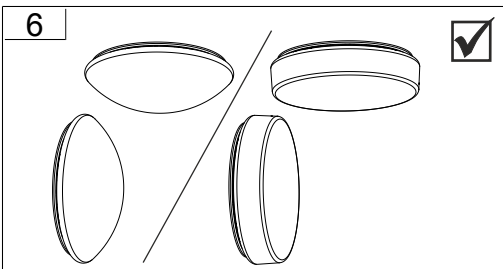
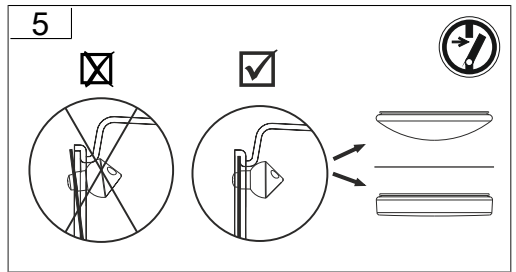
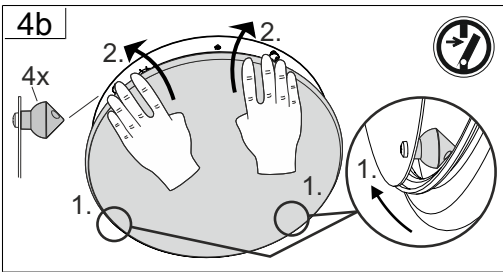
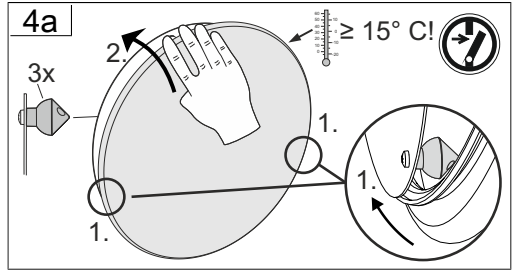
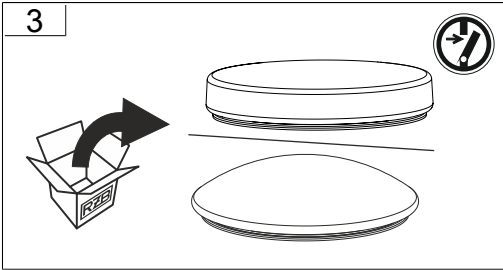
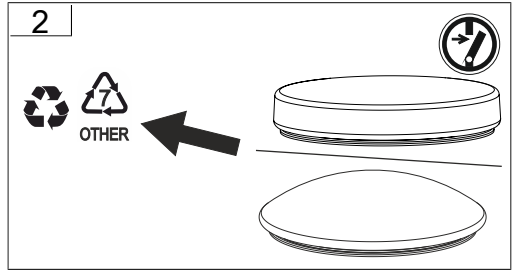
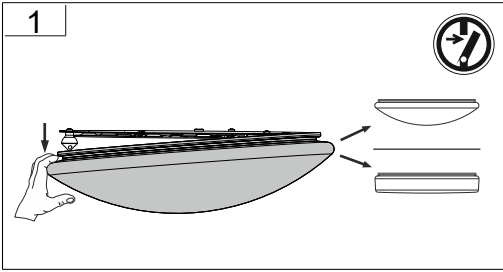


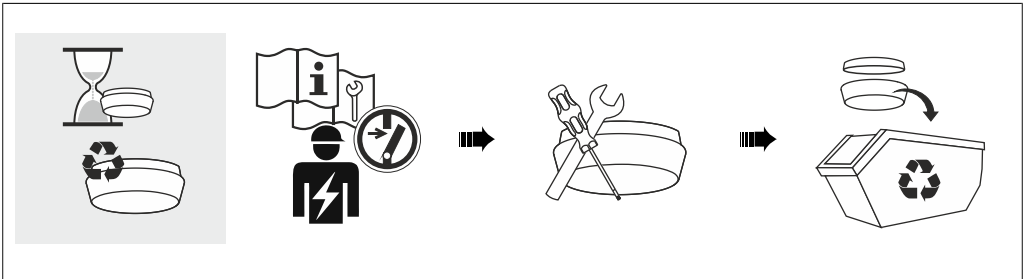
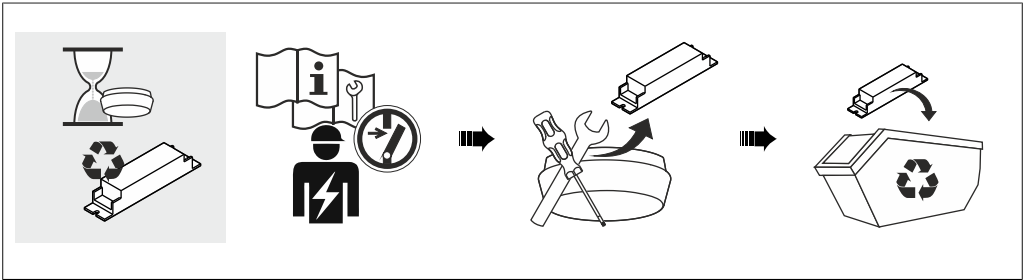
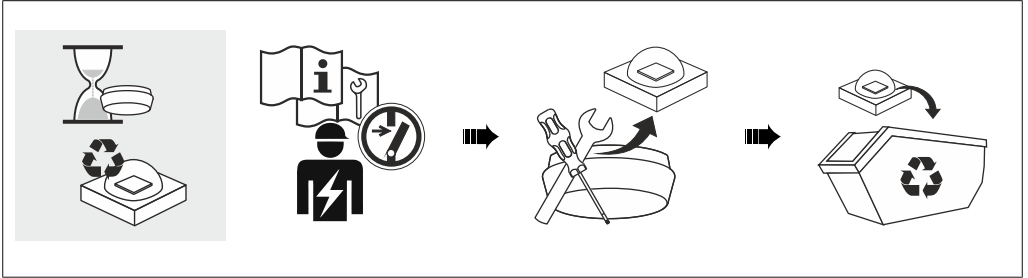
		312799.002.76				CCT 3000		CCT 4000		312799.002.1.76				CCT 3000		CCT 4000				
		[mA]	[W]	[lm]	[lm]	[mA]	[W]	[lm]	[lm]	[mA]	[W]	[lm]	[lm]	[mA]	[W]	[lm]	[lm]			
ON ● ON ↓ OFF ○ 1 2 3 4		350	14	2050	2100		350	14	2150	2200		350	14	2150	2200		350	14	2150	2200
		400	16	2300	2350		400	16	2450	2500		400	16	2450	2500		400	16	2450	2500
		450	18	2600	2650		450	18	2750	2800		450	18	2750	2800		450	18	2750	2800
		500	20	2900	2950		500	20	3050	3100		500	20	3050	3100		500	20	3050	3100
		550	22	3200	3250		550	22	3350	3400		550	22	3350	3400		550	22	3350	3400
		600	24	3450	3550		600	24	3650	3750		600	24	3650	3750		600	24	3650	3750
		650	26	3750	3850		650	26	3950	4050		650	26	3950	4050		650	26	3950	4050
		700	28	4000	4050		700	28	4200	4300		700	28	4200	4300		700	28	4200	4300

Werkseinstellung/  
factory setting





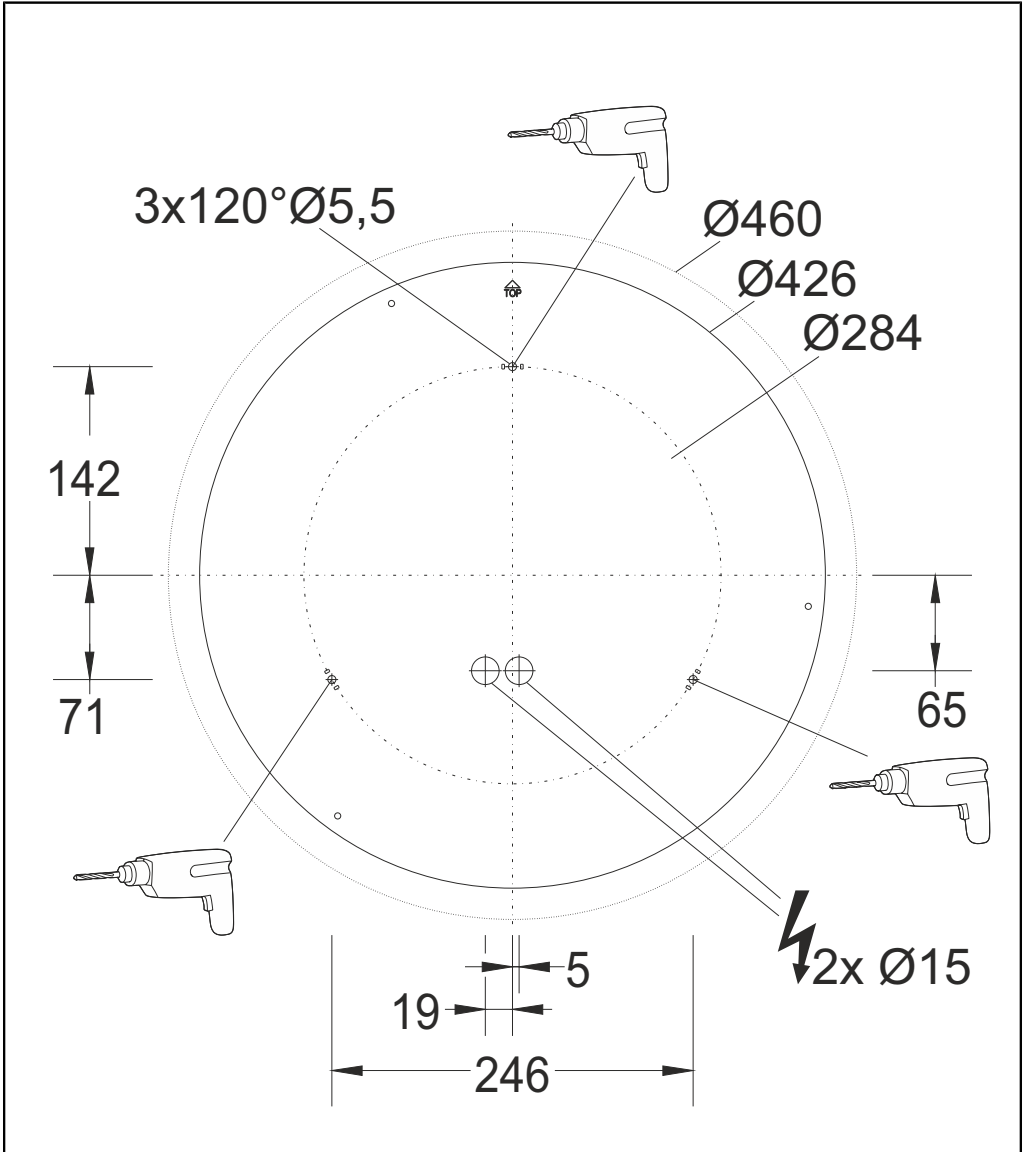












RZB - Rudolf Zimmermann, Bamberg GmbH

🏠 Rheinstraße 16, 96052 Bamberg

☎ 0951/7909-0

📠 0951/7909-198

🌐 [info@rzb-leuchten.de](mailto:info@rzb-leuchten.de)