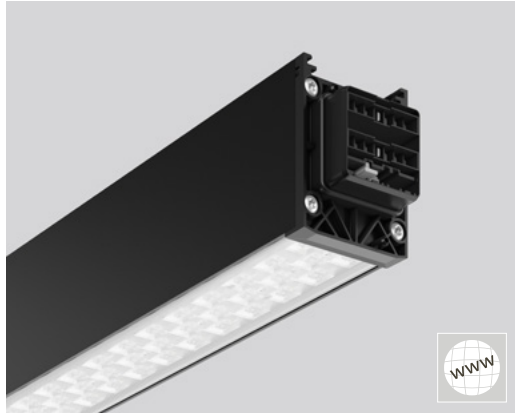


Continuous line systems



Overview



Accessories



LINEDO

Why was the product developed?

Put an end to bulky standards: integration of mounting rail and carrier plate in a single, ultra flat unit

Quest for perfection: further development of the "simplest continuous line in the world" as the unbeatable answer to all future lighting questions

Installation time booster: a system that passionately merges radical time savings and highest light quality

Evolution instead of standstill: major performance increase, safeguarding the budget and shaking up the market

Which problems are solved by the luminaire?

Light quality without compromise: 7 light distributions and 5 performance levels, MES technology, new 60° and 90° lenses

Relief from cost pressure: raised luminous efficacy renders capacity and low total cost of ownership (TCO) as standard

MES: the appropriate MultiLumen level can be set centrally and conveniently thanks to MultiLumen Easy Select. No need to work on individual luminaires: no climbing, not effort - simply clever!

All-in-one instead of parts chaos: put an end to bulky individual components – the module is the rail

Less effort: ultra-rapid installation thanks to complete plug-and-play modules

High application flexibility: can be combined with numerous functional modules, e.g. spotlights, emergency lighting, sensors

Product benefits

- + **Perfect light quality:** improved RUG value and optimised Color over Angle (CoA) for natural light
- + **MES technology:** foolproof setting of the lumen per switch (on/off versions)
- + **Jump in efficiency:** up to 200 lm/W with the usual flat design
- + **Price-performance:** major technological progress at the price of the predecessor
- + **Compatibility:** complete integration with existing LINEDO systems
- + **All-in-One:** mounting rail and carrier plate form an inseparable, slim unit

Available. New arrivals from 07/2026 | Prices per linear metre from €114.00



598	1163	2291	4547	project-specific solutions		
	White		Anodised aluminium		Black	project-specific solutions
830	840	850			80000 h (L ₈₀) DALI/CLO	
lm	13000 - 42000 lm (module length 4547 mm 8 units)			lm/W	up to 200 lm/W	
IP54						
on/off	DALI	CLO Constant Light Output				
5 pole	7 pole	14 pole				
	Plug & Play		Made in Germany			

RZB Rudolf Zimmermann, Bamberg GmbH | Rheinstraße 16 | 96052 Bamberg
Subject to technical changes | Prices are in € gross not including VAT | 02/2026

INDUSTRY